

**Zeppelin ZM110**  
 Serial No.: 6LPAL01385



**Zeppelin Baumaschinen**  
**Zeppelin Baumaschinen GmbH Niederlassung**  
**Köln**  
 Graf-Zeppelin-Str. 25  
 51147 Köln  
 Germany  
<https://www.zeppelin-cat.de/en/>

Mario Bertram  
 Phone: +49 2203929111  
 Mobile: +49 1754157707  
[mario.bertram@zeppelin.com](mailto:mario.bertram@zeppelin.com)

Konstantin Wehrwein  
 Phone: +49 2203929185  
 Fax: +49 2203929474  
 Mobile: +49 1718029587  
[konstantin.wehrwein@zeppelin.com](mailto:konstantin.wehrwein@zeppelin.com)

<b>Manufacturer</b>	<b>Zeppelin</b>
<b>Category</b>	<b>Mobile Excavators</b>
<b>Year</b>	<b>2018</b>
<b>Hours</b>	<b>3.154</b>

kind of cabin	cabin ROPS
boom	adjustable boom hydr.
kind of stick	standard
grapple line	yes
hydraulic lines	lines for hammer/shear
outriggers / blade	blade
kind of tires	double tires
tires condition front left	10 %
tires condition front right	10 %
tires condition rear left	10 %
tires condition rear right	10 %
rear view camera	yes
size class	0,6 cbm
Operating Weight	10,1 t
Engine Power	55 kW (75 HP)
air conditioning	yes

**Net price** **69.500,00 EUR (excl. VAT)**

**Terms of delivery** **FCA Zeppelin branch Köln**

This offer is without obligation. The offer is based on our General Terms and Conditions of Sale and Delivery. Changes to equipment and accessories required for technical reasons may be made at any time. Subject to errors, changes and intermediate sale. Statutory value-added tax shall be added to all price.

**ZEPELIN**

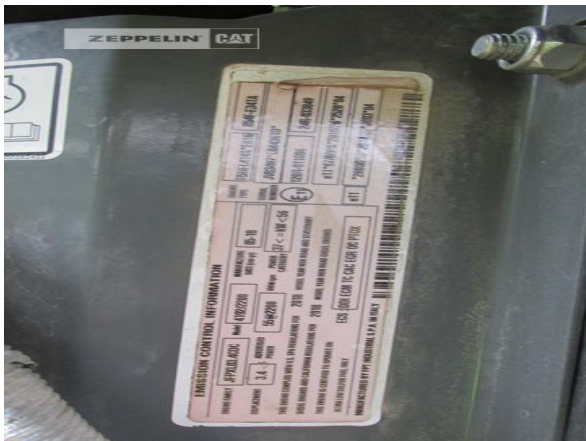


**Zeppelin ZM110**  
Serial No.: 6LPAL01385





**Zeppelin ZM110**  
 Serial No.: 6LPAL01385



**Zeppelin ZM110**

Serial No.: 6LPAL01385

