

ZEPPELIN**CAT****Wacker ZM70**

Serial No.: WNCE1402CPAL01039


Zeppelin Baumaschinen
Zeppelin Baumaschinen GmbH Niederlassung
Rendsburg

 Nikolaus-Otto-Str. 4
 24783 Osterrönfeld
 Germany

<https://www.zeppelin-cat.de/en/>

Benjamin Kunisch

Phone: +49 4331847732

Mobile: +49 15146190739

benjamin.kunisch@zeppelin.com

Philipp Westhoff

Mobile: +49 1712342639

philipp.westhoff@zeppelin.com
Manufacturer**Category****Year****Hours****Wacker****Mobile Excavators****2018****2.135**

kind of cabin

cabin ROPS

boom

adjustable boom hydr.

stick lenght

1.680 mm

kind of bucket

ditch cleaning bucket

cutting width

1.550 mm

bucket condition

50 %

kind of bucket 2

gp bucket

cutting width

300 mm

bucket 2 condition

50 %

kind of bucket 3

gp bucket

cutting width excavator bucket 3

800 mm

bucket 3 condition

50 %

grapple line

yes

hydraulic lines

lines for hammer/shear

outriggers / blade

blade

kind of tires

double tires

tires condition front left

50 %

tires condition front right

50 %

tires condition rear left

50 %

tires condition rear right

50 %

manufacturer tires

Mitas

tires size

MITAS 7.5-15 / FL-08

quick coupler

quick coupler mechanic

quick coupler type

Miller Schnellwechsler mechanisch

size class

0,3 cbm

Operating Weight

6,9 t

Engine Power

19 kW (27 HP)

Wacker ZM70

Serial No.: WNCE1402CPAL01039

equipment

Diverse Löffel und ein Tiefbaugreifer verfügbar

Net price**53.900,00 EUR (excl. VAT)****Terms of delivery****FCA Zeppelin branch Rendsburg**

This offer is without obligation. The offer is based on our General Terms and Conditions of Sale and Delivery. Changes to equipment and accessories required for technical reasons may be made at any time. Subject to errors, changes and intermediate sale. Statutory value-added tax shall be added to all price.

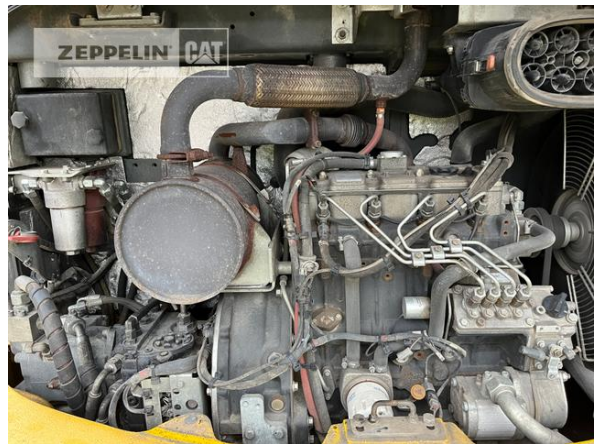
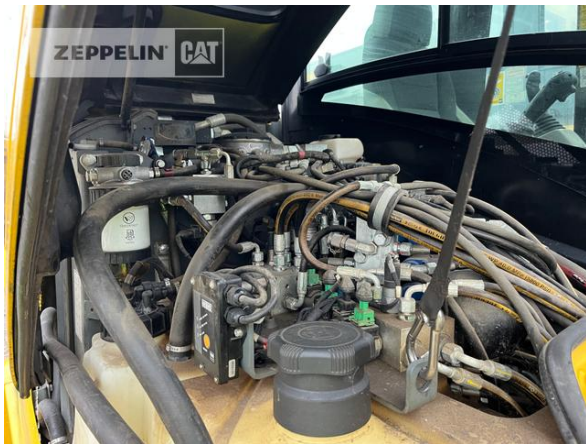
Wacker ZM70
Serial No.: WNCE1402CPAL01039



Wacker ZM70
 Serial No.: WNCE1402CPAL01039



Wacker ZM70
Serial No.: WNCE1402CPAL01039



Wacker ZM70

Serial No.: WNCE1402CPAL01039



Wacker ZM70

Serial No.: WNCE1402CPAL01039

