

Wacker DT15

Serial No.: FA04972

**Zeppelin Baumaschinen
Zeppelin Baumaschinen GmbH Niederlassung
Hannover**Zeppelinweg 1
30880 Laatzen
Germany<https://www.zeppelin-cat.de/en/>

Marc Büsing

Phone: +49 5102700211

Fax: +49 5102700243

Mobile: +49 1712348444

marc.buesing@zeppelin.com

Philipp Westhoff

Mobile: +49 1712342639

philipp.westhoff@zeppelin.com**Manufacturer****Wacker****Category****Articulated Dump Trucks****Year****2019****Hours****468**

body condition

80 %

size class

0,8 cbm

Operating Weight

1 t

Engine Power

16 kW (22 HP)

equipment

Länge 2.674,0 mm Breite 1.102,0 mm Höhe 2.372,0 mm Gewicht

1.040,00 kg Nutzlast max. 1.500,0 kg Mulde Frontkipmulde

Muldeninhalt gestrichen 632,0 l Muldeninhalt gehäuft 760,0 l

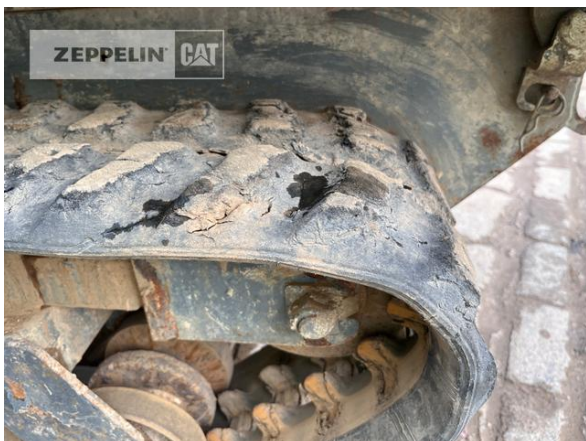
Betriebsgewicht (min.-max.) 1.345,0 - 1.695,0 kg Transportgewicht

1.270,0 kg

Net price**Price on Request****Terms of delivery****FCA Zeppelin branch Hannover**

This offer is without obligation. The offer is based on our General Terms and Conditions of Sale and Delivery. Changes to equipment and accessories required for technical reasons may be made at any time. Subject to errors, changes and intermediate sale. Statutory value-added tax shall be added to all price.

Wacker DT15
Serial No.: FA04972



Wacker DT15
 Serial No.: FA04972

