

**Wacker DT15**  
Serial No.: FA04968



**Zeppelin Baumaschinen**  
**Zeppelin Baumaschinen GmbH Niederlassung**  
**Rostock**  
Zeppelinstr. 4  
18196 Kavelstorf  
Germany  
<https://www.zeppelin-cat.de/en/>

René Hirschmann  
Phone: +49 3375903412  
Fax: +49 3375903450  
Mobile: +49 1733909955  
[rene.hirschmann@zeppelin.com](mailto:rene.hirschmann@zeppelin.com)

Christian Reinert  
Phone: +49 3375903411  
Mobile: +49 1756169727  
[Christian.Reinert@zeppelin.com](mailto:Christian.Reinert@zeppelin.com)

**Manufacturer**  
**Category**  
**Year**  
**Hours**

**Wacker**  
**Articulated Dump Trucks**  
**2019**  
**1.009**

size class  
Operating Weight  
Engine Power  
equipment

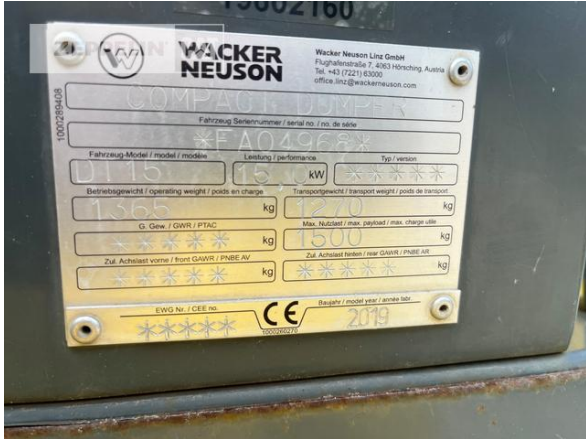
0,8 cbm  
1 t  
16 kW (22 HP)  
Muldeninhalt (m<sup>3</sup>)0.69, Nutzlast (kg)1500 Leistung (kW)15,2;  
Steigfähigkeit (%)27 Fahrgeschwindigkeit Vorwärts (km/h)7,5  
Fahrgeschwindigkeit Rückwärts (km/h)7,5 Tankinhalt (l)24;  
Bemerkung3-Seiten-Kipper Länge Transport (mm)2640; Breite Transport  
(mm)1080 Höhe Transport (mm)2022; Transportgewicht (kg)1105

**Net price**  
**Terms of delivery**

**Price on Request**  
**FCA Zeppelin branch Rostock**

This offer is without obligation. The offer is based on our General Terms and Conditions of Sale and Delivery. Changes to equipment and accessories required for technical reasons may be made at any time. Subject to errors, changes and intermediate sale. Statutory value-added tax shall be added to all price.

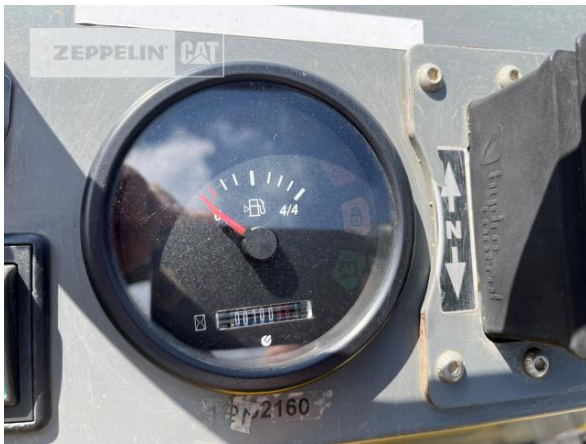
**Wacker DT15**  
 Serial No.: FA04968



**Wacker DT15**  
Serial No.: FA04968



**Wacker DT15**  
Serial No.: FA04968



**Wacker DT15**  
Serial No.: FA04968

