

Wacker DT15
Serial No.: FA04965



Zeppelin Baumaschinen
Zeppelin Baumaschinen GmbH Niederlassung
Rendsburg
Nikolaus-Otto-Str. 4
24783 Osterrönfeld
Germany
<https://www.zeppelin-cat.de/en/>

Benjamin Kunisch
Phone: +49 4331847732
Mobile: +49 15146190739
benjamin.kunisch@zeppelin.com

Philipp Westhoff
Mobile: +49 1712342639
philipp.westhoff@zeppelin.com

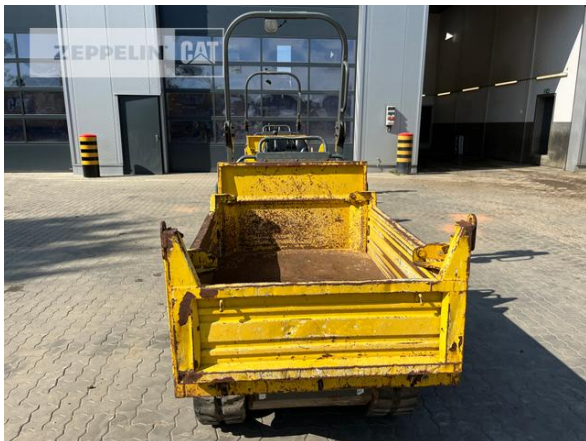
Manufacturer	Wacker
Category	Articulated Dump Trucks
Year	2019
Hours	692

body capacity	0,7 cbm
Payload	1,5 t
body condition	70 %
size class	0,8 cbm
Operating Weight	1 t
Engine Power	16 kW (22 HP)
equipment	Typ Wacker DT15 Nutzlast (kg) 1500 Leistung (kW) 15,2 Tankinhalt (l) 24 Länge Transport (mm) 2640 Höhe Transport (mm) 2022 Breite Transport (mm) 1080 Muldeninhalt (m³) 0.69 Fahrgeschwindigkeit Vorwärts (km/h) 7,5 Transportgewicht (kg) 1105 Fahrgeschwindigkeit Rückwärts (km/h) 7,5 Steigfähigkeit (%) 27 + einklappbarer ROPS-Bügel + Hydrostatischer Fahrantrieb + Pendelnde Laufrollen

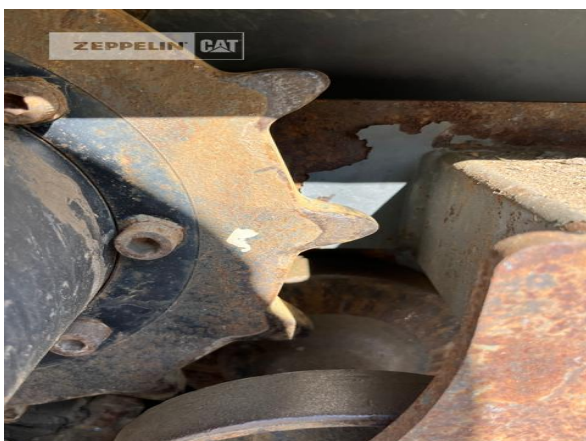
Net price	11.900,00 EUR (excl. VAT)
Terms of delivery	FCA Zeppelin branch Rendsburg

This offer is without obligation. The offer is based on our General Terms and Conditions of Sale and Delivery. Changes to equipment and accessories required for technical reasons may be made at any time. Subject to errors, changes and intermediate sale. Statutory value-added tax shall be added to all price.

Wacker DT15
Serial No.: FA04965



Wacker DT15
Serial No.: FA04965



Wacker DT15
 Serial No.: FA04965

