

Wacker DT15
Serial No.: FA04963



Zeppelin Baumaschinen
Zeppelin Baumaschinen GmbH Niederlassung
Leipzig
Zeppelinstr. 3
04509 Wiedemar
Germany
<https://www.zeppelin-cat.de/en/>

Phillip Uri
Phone: +49 3614933318
Mobile: +49 1722743892
phillip.uri@zeppelin.com

Steve Mühlberg
Phone: +49 3520446745
Mobile: +49 1728550688
steve.muehlberg@zeppelin.com

Manufacturer
Category
Year
Hours

Wacker
Articulated Dump Trucks
2019
657

size class
Operating Weight
Engine Power
equipment

0,8 cbm
1 t
16 kW (22 HP)
Muldeninhalt (m³)0.69, Nutzlast (kg)1500 Leistung (kW)15,2;
Steigfähigkeit (%)27 Fahrgeschwindigkeit Vorwärts (km/h)7,5
Fahrgeschwindigkeit Rückwärts (km/h)7,5 Tankinhalt (l)24;
Bemerkung3-Seiten-Kipper Länge Transport (mm)2640; Breite Transport
(mm)1080 Höhe Transport (mm)2022; Transportgewicht (kg)1105

Net price
Terms of delivery

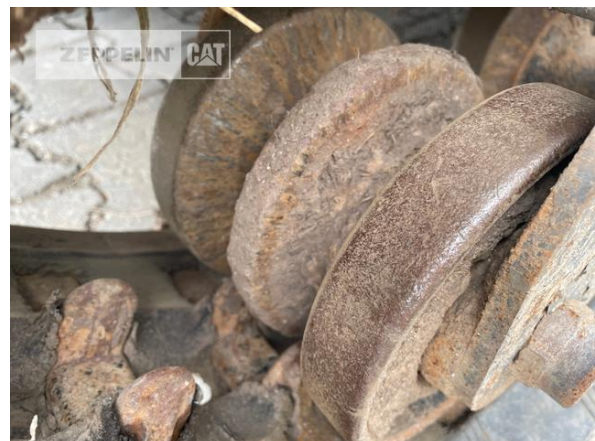
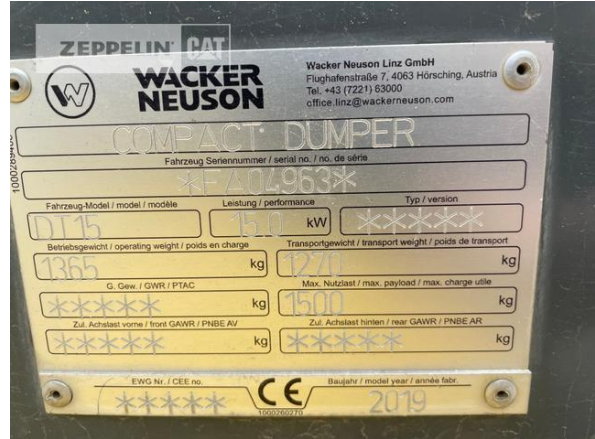
12.000,00 EUR (excl. VAT)
FCA Zeppelin branch Leipzig

This offer is without obligation. The offer is based on our General Terms and Conditions of Sale and Delivery. Changes to equipment and accessories required for technical reasons may be made at any time. Subject to errors, changes and intermediate sale. Statutory value-added tax shall be added to all price.

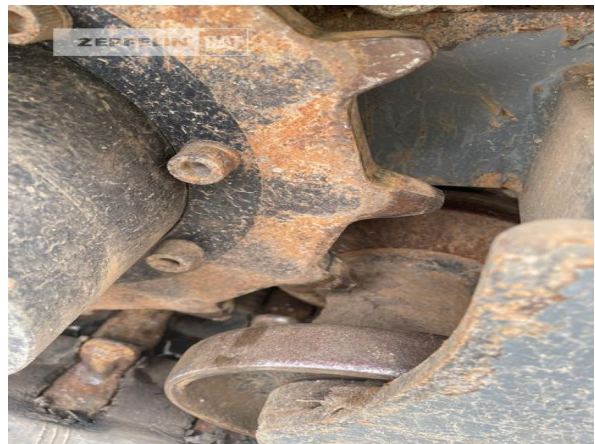
Wacker DT15
Serial No.: FA04963



Wacker DT15
Serial No.: FA04963



Wacker DT15
Serial No.: FA04963



Wacker DT15
 Serial No.: FA04963

