

**Cat MH3026-06C**  
 Serial No.: FB900588



**Zeppelin Baumaschinen**  
**Zeppelin Baumaschinen GmbH**  
**Gebrauchtmaschinenzentrum Alsfeld**  
 Zeppelinstraße, Zugang Karl-Bröger-Straße 8  
 36304 Alsfeld  
 Germany  
<https://www.zeppelin-cat.de/en/>

Roger Immig  
 Phone: +49 6631960126  
 Fax: +49 6631960140  
 Mobile: +49 1738902692  
[roger.immig@zeppelin.com](mailto:roger.immig@zeppelin.com)

Thorsten Hill  
 Phone: +49 6631960115  
 Fax: +49 6631960140  
 Mobile: +49 1733529424  
[thorsten.hill@zeppelin.com](mailto:thorsten.hill@zeppelin.com)

Ciro Micino  
 Phone: +49 6631960118  
 Mobile: +49 1712365249  
[ciro.micino@zeppelin.com](mailto:ciro.micino@zeppelin.com)

**Manufacturer** Cat  
**Category** Material Handlers  
**Year** 2021  
**Hours** 6.644

kind of cabin	cabin ROPS
boom	industrial
kind of stick	industrial
stick lenght	5.900 mm
grapple line	yes
outriggers / blade	4 outriggers
kind of tires	double tires
tires condition front left	50 %
tires condition front right	50 %
tires condition rear left	50 %
tires condition rear right	50 %
tires filling	solid rubber
tires size	10.00-20
rook guard roof	yes
auto lubrication	yes
rear view camera	yes
size class	0,6 cbm
Operating Weight	25,5 t
Engine Power	128 kW (175 HP)
air conditioning	yes
equipment	Generator

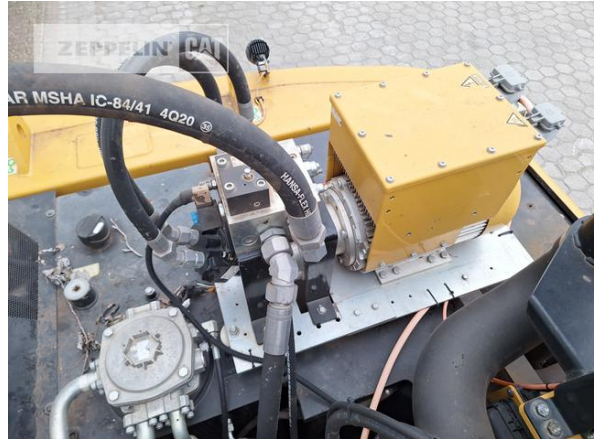
**Net price** **185.000,00 EUR (excl. VAT)**  
**Terms of delivery** **FCA Zeppelin branch Alsfeld**

**Cat MH3026-06C**  
Serial No.: FB900588





**Cat MH3026-06C**  
Serial No.: FB900588



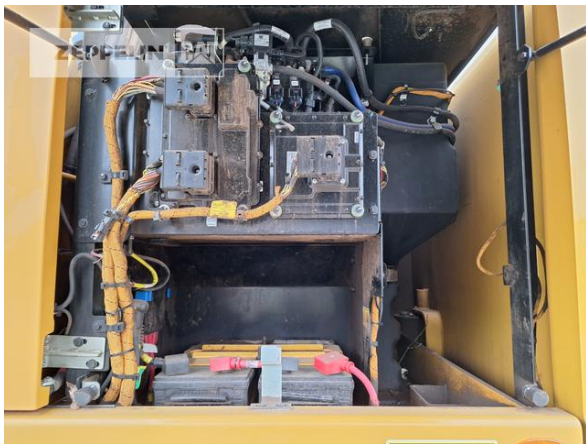


**Cat MH3026-06C**  
Serial No.: FB900588



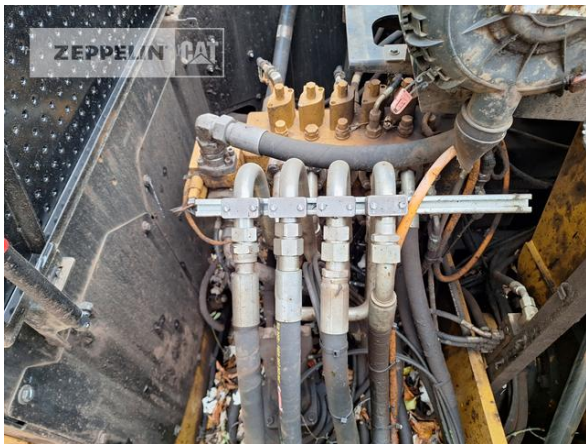


**Cat MH3026-06C**  
Serial No.: FB900588





**Cat MH3026-06C**  
Serial No.: FB900588





**Cat MH3026-06C**  
Serial No.: FB900588

