

**Cat MH3026-06C**  
 Serial No.: FB900509



**Zeppelin Baumaschinen**  
**Zeppelin Baumaschinen GmbH Niederlassung**  
**Erlangen**  
 Graf-Zeppelin-Str. 5-7  
 91056 Erlangen  
 Germany  
<https://www.zeppelin-cat.de/en/>

Wilhelm Schusser  
 Phone: +49 9131999316  
 Fax: +49 9131999333  
 Mobile: +49 1728642858  
[Wilhelm.Schusser@zeppelin.com](mailto:Wilhelm.Schusser@zeppelin.com)

**Manufacturer**  
**Category**  
**Year**  
**Hours**

**Cat**  
**Material Handlers**  
**2020**  
**3.666**

kind of cabin	cabin ROPS
elevated cab	hydraulic elevated cab
boom	mono boom
kind of stick	standard
stick lenght	4.800 mm
hydraulic lines	lines for hammer/shear
outriggers / blade	4 outriggers
kind of tires	double tires
tires condition front left	30 %
tires condition front right	10 %
tires condition rear left	50 %
tires condition rear right	50 %
manufacturer tires	special bucket
tires filling	solid rubber
tires size	10.00-20
rook guard roof	yes
quick coupler	quick coupler hydraulic
quick coupler type	OilQuick OQ70/55
auto lubrication	yes
rear view camera	yes
size class	0,6 cbm
Operating Weight	25,5 t
Engine Power	128 kW (175 HP)
air conditioning	yes
equipment	ULM114, Ausleger 6,8m, Stiel gerade 4,8m Leckölleitung Elektrische Betankungspumpe Joystick Lenkung

 ZEPPELIN

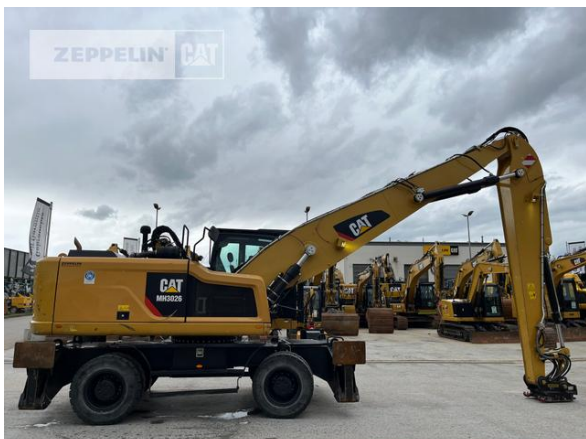
**Cat MH3026-06C**  
Serial No.: FB900509

**Net price**  
Terms of delivery

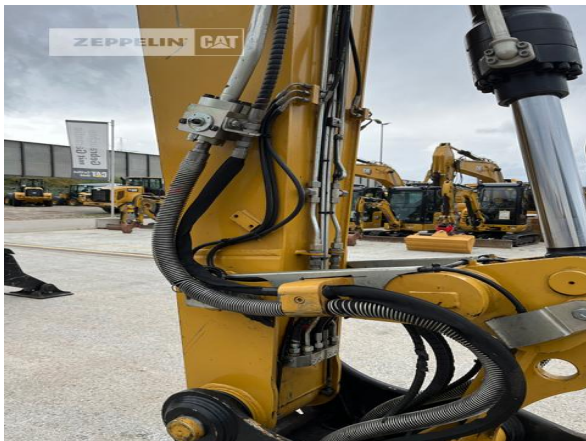
**170.000,00 EUR (excl. VAT)**  
FCA Zeppelin branch Erlangen

This offer is without obligation. The offer is based on our General Terms and Conditions of Sale and Delivery. Changes to equipment and accessories required for technical reasons may be made at any time. Subject to errors, changes and intermediate sale. Statutory value-added tax shall be added to all price.

**Cat MH3026-06C**  
Serial No.: FB900509



**Cat MH3026-06C**  
Serial No.: FB900509



**Cat MH3026-06C**  
Serial No.: FB900509



**Cat MH3026-06C**  
Serial No.: FB900509

