

Cat MH3026-06C
 Serial No.: FB900501



Zeppelin Baumaschinen
Zeppelin Baumaschinen GmbH Niederlassung
Illingen
 Zeppelinstr. 2
 66557 Illingen
 Germany
<https://www.zeppelin-cat.de/en/>

Andrej Kraus
 Phone: +49 682540513
 Mobile: +49 1718091376
andrej.kraus@zeppelin.com

Manufacturer	Cat
Category	Material Handlers
Year	2020
Hours	5.792
kind of cabin	cabin ROPS
elevated cab	hydraulic elevated cab
boom	industrial
kind of stick	industrial
grapple line	yes
outriggers / blade	4 outriggers
kind of tires	double tires
tires condition front left	40 %
tires condition front right	40 %
tires condition rear left	40 %
tires condition rear right	40 %
manufacturer tires	special bucket
tires filling	solid rubber
tires size	10.00-20
rook guard roof	yes
auto lubrication	Beka-Max
rear view camera	yes
size class	0,6 cbm
Operating Weight	25,5 t
Engine Power	128 kW (175 HP)

Net price **159.000,00 EUR (excl. VAT)**
Terms of delivery **FCA Zeppelin branch Illingen**

This offer is without obligation. The offer is based on our General Terms and Conditions of Sale and Delivery. Changes to equipment and accessories required for technical reasons may be made at any time. Subject to errors, changes and intermediate sale. Statutory value-added tax shall be added to all price.

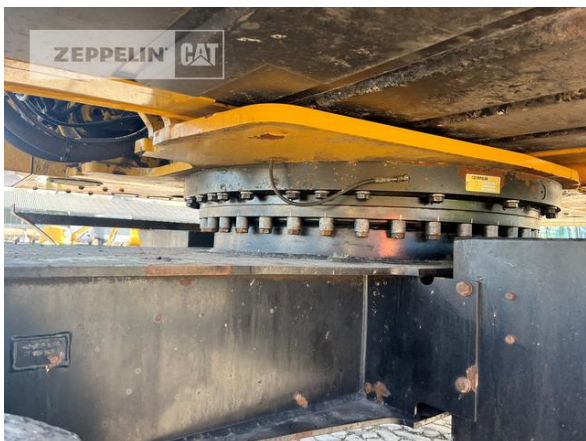
Cat MH3026-06C
Serial No.: FB900501



Cat MH3026-06C
Serial No.: FB900501



Cat MH3026-06C
Serial No.: FB900501



Cat MH3026-06C
 Serial No.: FB900501



Cat MH3026-06C
Serial No.: FB900501

