

**Cat MH3022**  
 Serial No.: FB300308



**Zeppelin Baumaschinen**  
**Bereich Konzernkunden**  
 Graf-Zeppelin-Platz 1  
 85748 Garching bei München  
 Germany  
<https://www.zeppelin-cat.de/en/>

Mathias Stemmer  
 Phone: +49 8932197550  
 Fax: +49 8932197280  
 Mobile: +49 1721334554  
[mathias.stemmer@zeppelin.com](mailto:mathias.stemmer@zeppelin.com)

<b>Manufacturer</b>	<b>Cat</b>
<b>Category</b>	<b>Material Handlers</b>
<b>Year</b>	<b>2017</b>
<b>Hours</b>	<b>11.220</b>
kind of cabin	cabin ROPS
boom	industrial
kind of stick	industrial stick
grapple line	yes
outriggers / blade	4 outriggers
kind of tires	double tires
tires condition front left	60 %
tires condition front right	60 %
tires condition rear left	60 %
tires condition rear right	60 %
tires filling	tire ballast
tires size	10.00-20
rook guard roof	yes
quick coupler	quick coupler hydraulic
quick coupler type	CW30H
auto lubrication	yes
protective ventilation	yes
rear view camera	yes
Operating Weight	24,9 t
Engine Power	110 kW (150 HP)
air conditioning	yes
equipment	Standort/location: München/Munich, letzter Service bei/last service at: 11.213, EPA

 ZEPPELIN

**Cat MH3022**

Serial No.: FB300308

**Net price**

**89.000,00 EUR (excl. VAT)**

**Terms of delivery**

**FCA Zeppelin branch Konzernkunden**

This offer is without obligation. The offer is based on our General Terms and Conditions of Sale and Delivery. Changes to equipment and accessories required for technical reasons may be made at any time. Subject to errors, changes and intermediate sale. Statutory value-added tax shall be added to all price.

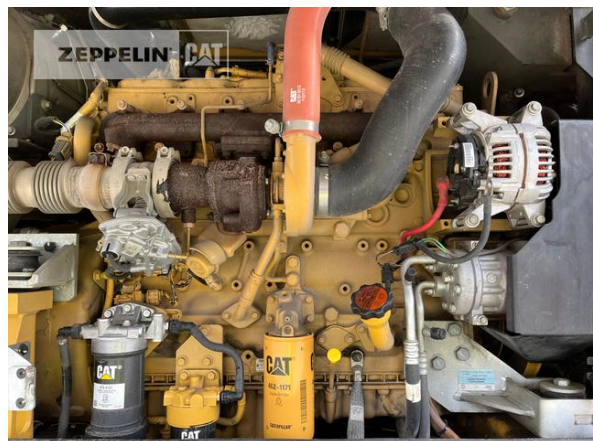
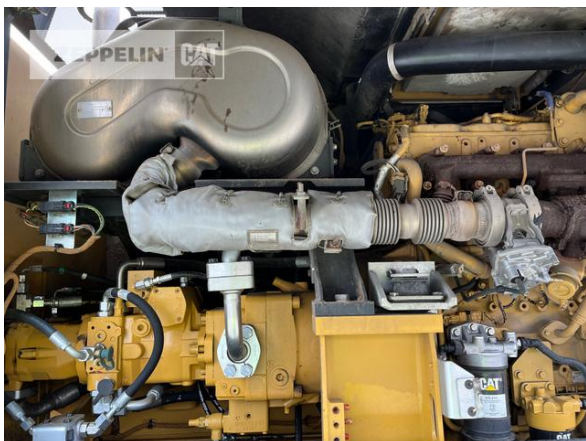
**Cat MH3022**  
Serial No.: FB300308



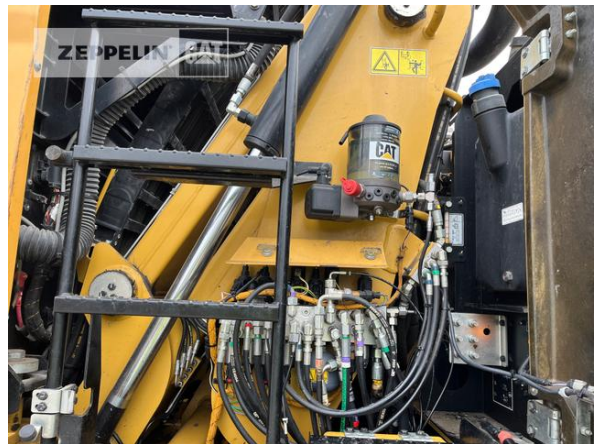
**Cat MH3022**  
 Serial No.: FB300308



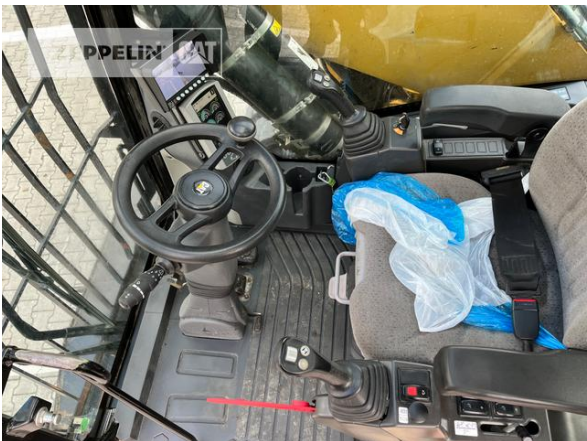
**Cat MH3022**  
Serial No.: FB300308



**Cat MH3022**  
Serial No.: FB300308



**Cat MH3022**  
 Serial No.: FB300308



**Cat MH3022**  
Serial No.: FB300308

