

Cat MH3022
 Serial No.: FB300222



Zeppelin Baumaschinen
Zeppelin Baumaschinen GmbH
Gebrauchtmaschinenzentrum Alsfeld
 Zeppelinstraße, Zugang Karl-Bröger-Straße 8
 36304 Alsfeld
 Germany
<https://www.zeppelin-cat.de/en/>

Roger Immig
 Phone: +49 6631960126
 Fax: +49 6631960140
 Mobile: +49 1738902692
roger.immig@zeppelin.com

Thorsten Hill
 Phone: +49 6631960115
 Fax: +49 6631960140
 Mobile: +49 1733529424
thorsten.hill@zeppelin.com

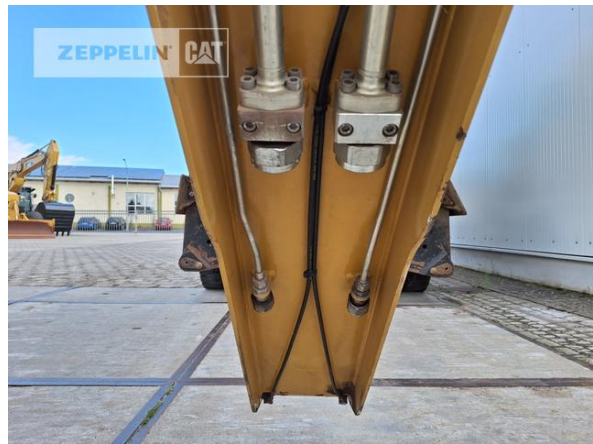
Ciro Micino
 Phone: +49 6631960118
 Mobile: +49 1712365249
ciro.micino@zeppelin.com

| | |
|-----------------------------|--------------------------|
| Manufacturer | Cat |
| Category | Material Handlers |
| Year | 2017 |
| Hours | 10.733 |
| kind of cabin | cabin ROPS |
| elevated cab | hydraulic elevated cab |
| boom | industrial |
| kind of stick | industrial stick |
| stick lenght | 4.900 mm |
| grapple line | yes |
| outriggers / blade | 4 outriggers |
| kind of tires | double tires |
| tires condition front left | 50 % |
| tires condition front right | 50 % |
| tires condition rear left | 60 % |
| tires condition rear right | 80 % |
| rook guard roof | yes |
| protective ventilation | yes |
| rear view camera | yes |
| Operating Weight | 22,7 t |
| Engine Power | 124 kW (169 HP) |
| air conditioning | yes |

Net price **89.000,00 EUR (excl. VAT)**
Terms of delivery **FCA Zeppelin branch Alsfeld**

This offer is without obligation. The offer is based on our General Terms and Conditions of Sale and Delivery. Changes to equipment and accessories required for technical reasons may be made at any time. Subject to errors, changes and intermediate sale. Statutory value-added tax shall be added to all price.

Cat MH3022
Serial No.: FB300222



Cat MH3022
Serial No.: FB300222



Cat MH3022

Serial No.: FB300222

