

Cat MH3022-06C
Serial No.: FB302573

Zeppelin Baumaschinen
Zeppelin Baumaschinen GmbH Niederlassung
Böblingen
Hanns-Klemm-Str. 16
71034 Böblingen
Germany
<https://www.zeppelin-cat.de/en/>

Mikhail Brychkov
Phone: +49 7031640514
Mobile: +49 15152214560
zbm-gm080@zeppelin.com

Manufacturer	Cat
Category	Material Handlers
Year	2020
Hours	5.311
kind of cabin	cabin ROPS
elevated cab	hydraulic elevated cab
boom	industrial
stick lenght	4.200 mm
grapple line	yes
hydraulic lines	lines for hammer/shear
outriggers / blade	4 outriggers
kind of tires	double tires
tires condition front left	80 %
tires condition front right	80 %
tires condition rear left	80 %
tires condition rear right	80 %
manufacturer tires	Dunlop
tires filling	solid rubber
tires size	10.00-20
auto lubrication	yes
rear view camera	yes
Operating Weight	21,5 t
Engine Power	125 kW (171 HP)
air conditioning	yes

Net price **149.000,00 EUR (excl. VAT)**
Terms of delivery **FCA Zeppelin branch Böblingen**

This offer is without obligation. The offer is based on our General Terms and Conditions of Sale and Delivery. Changes to equipment and accessories required for technical reasons may be made at any time. Subject to errors, changes and intermediate sale. Statutory value-added tax shall be added to all price.

Cat MH3022-06C
Serial No.: FB302573



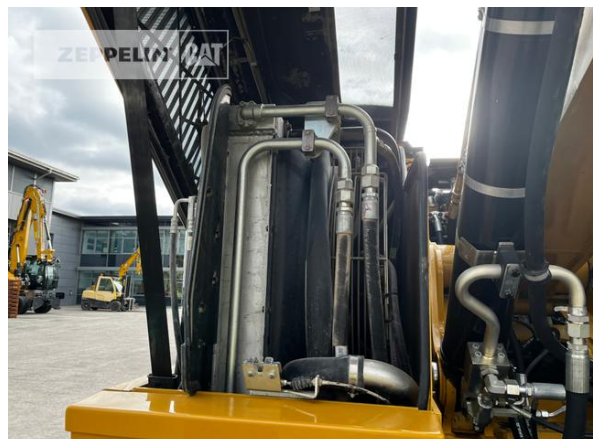
ZEPPELIN



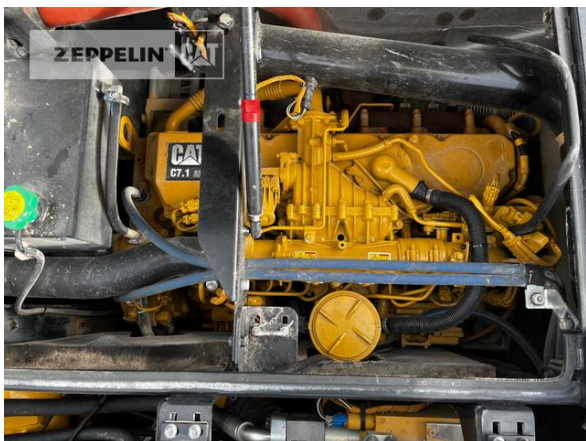
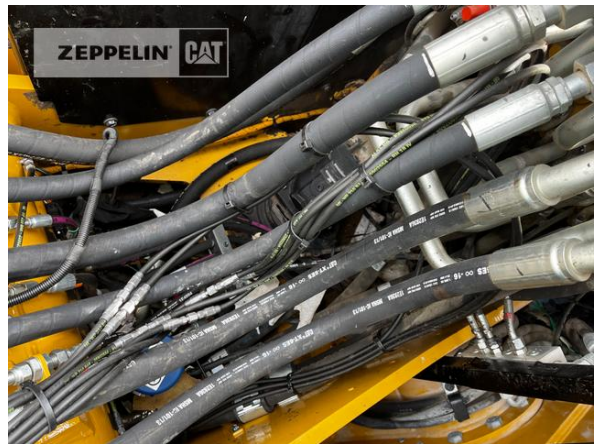
Cat MH3022-06C
Serial No.: FB302573



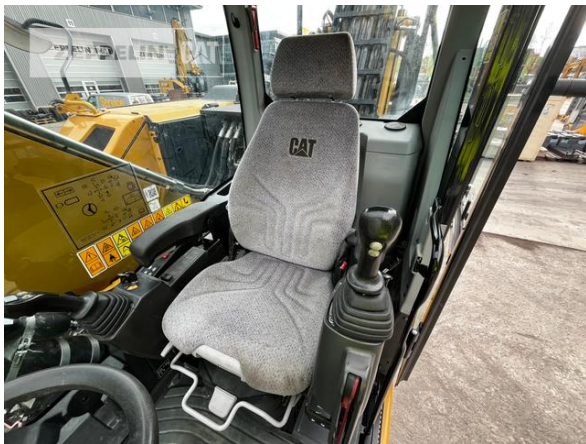
Cat MH3022-06C
Serial No.: FB302573



Cat MH3022-06C
Serial No.: FB302573



Cat MH3022-06C
Serial No.: FB302573



Cat MH3022-06C
Serial No.: FB302573



Cat MH3022-06C
 Serial No.: FB302573

