

**Cat MH3022-06C**  
 Serial No.: FB302562



**Zeppelin Baumaschinen**  
**Zeppelin Baumaschinen GmbH Niederlassung**  
**Köln**  
 Graf-Zeppelin-Str. 25  
 51147 Köln  
 Germany  
<https://www.zeppelin-cat.de/en/>

Mario Bertram  
 Phone: +49 2203929111  
 Mobile: +49 1754157707  
[mario.bertram@zeppelin.com](mailto:mario.bertram@zeppelin.com)

Konstantin Wehrwein  
 Phone: +49 2203929185  
 Fax: +49 2203929474  
 Mobile: +49 1718029587  
[konstantin.wehrwein@zeppelin.com](mailto:konstantin.wehrwein@zeppelin.com)

**Manufacturer**  
**Category**  
**Year**  
**Hours**

**Cat**  
**Material Handlers**  
**2020**  
**4.890**

kind of cabin	cabin ROPS
elevated cab	hydraulic elevated cab
boom	industrial
kind of stick	industrial stick
stick lenght	4.200 mm
grapple line	yes
outriggers / blade	4 outriggers
kind of tires	double tires
tires condition front left	80 %
tires condition front right	80 %
tires condition rear left	80 %
tires condition rear right	80 %
tires filling	solid rubber
quick coupler	quick coupler hydraulic
quick coupler type	CW30
auto lubrication	yes
protective ventilation	yes
rear view camera	yes
Operating Weight	21,5 t
Engine Power	125 kW (171 HP)
air conditioning	yes
equipment	Umkehrlüfter mit Vibrationsgitter Abbruchgreifer G31 5B/D Ausleger 5.35m

**ZEPPELIN****Cat MH3022-06C**

Serial No.: FB302562

**Net price****169.000,00 EUR (excl. VAT)**

Terms of delivery

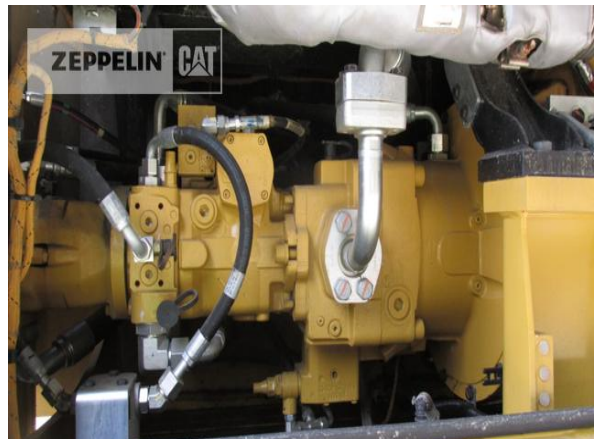
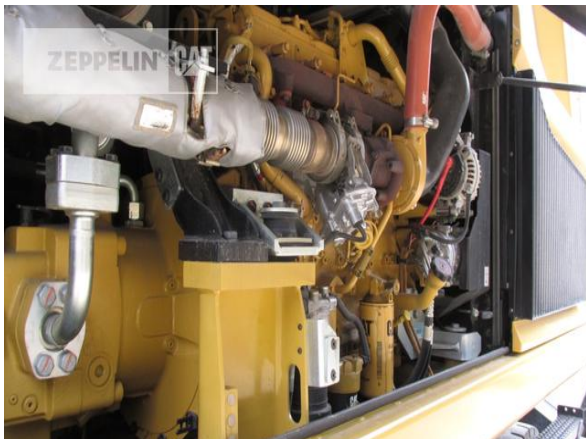
FCA Zeppelin branch Köln

This offer is without obligation. The offer is based on our General Terms and Conditions of Sale and Delivery. Changes to equipment and accessories required for technical reasons may be made at any time. Subject to errors, changes and intermediate sale. Statutory value-added tax shall be added to all price.

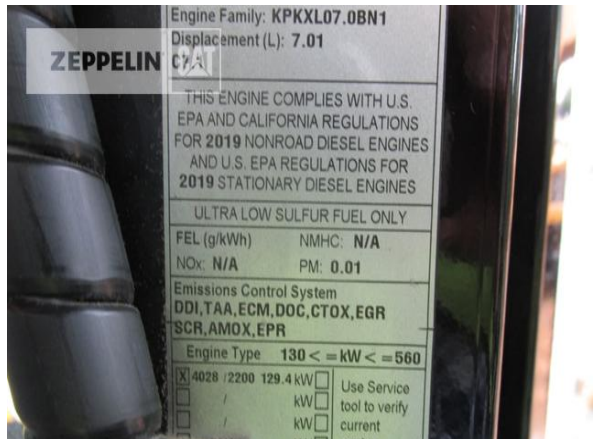
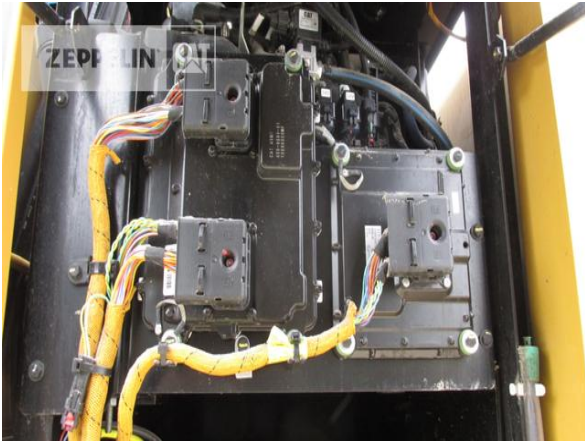
**Cat MH3022-06C**  
Serial No.: FB302562



**Cat MH3022-06C**  
Serial No.: FB302562



**Cat MH3022-06C**  
 Serial No.: FB302562



**Cat MH3022-06C**  
Serial No.: FB302562

