

**Cat M323F**  
 Serial No.: RH600144



**Zeppelin Baumaschinen**  
**Zeppelin Baumaschinen GmbH Niederlassung**  
**Erlangen**  
 Graf-Zeppelin-Str. 5-7  
 91056 Erlangen  
 Germany  
<https://www.zeppelin-cat.de/en/>

Wilhelm Schusser  
 Phone: +49 9131999316  
 Fax: +49 9131999333  
 Mobile: +49 1728642858  
[Wilhelm.Schusser@zeppelin.com](mailto:Wilhelm.Schusser@zeppelin.com)

<b>Manufacturer</b>	<b>Cat</b>
<b>Category</b>	<b>Rail-road excavators</b>
<b>Year</b>	<b>2022</b>
<b>Hours</b>	<b>4.917</b>

kind of cabin	cabin ROPS
boom	adjustable boom hydr.
kind of stick	standard
stick lenght	2.000 mm
kind of tires	double tires
tires condition front left	100 %
tires condition front right	100 %
tires condition rear left	100 %
tires condition rear right	100 %
manufacturer tires	special bucket
tires filling	air
tires size	10.00-20
auto lubrication	Beka-Max
rear view camera	yes
air conditioning	yes
equipment	Bio-Öl Befüllung

<b>Net price</b>	<b>Price on Request</b>
<b>Terms of delivery</b>	<b>FCA Zeppelin branch Erlangen</b>

This offer is without obligation. The offer is based on our General Terms and Conditions of Sale and Delivery. Changes to equipment and accessories required for technical reasons may be made at any time. Subject to errors, changes and intermediate sale. Statutory value-added tax shall be added to all price.

**Cat M323F**  
Serial No.: RH600144

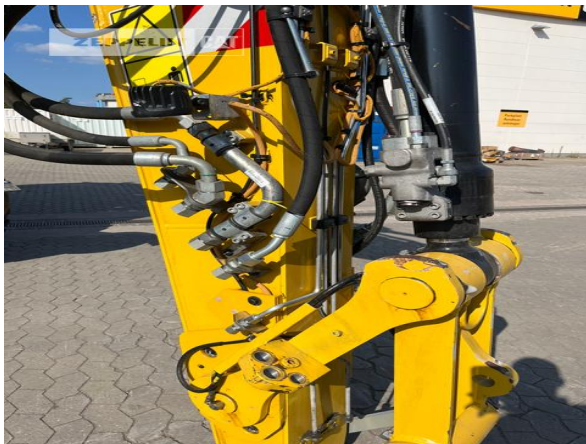




**ZEPPELIN**

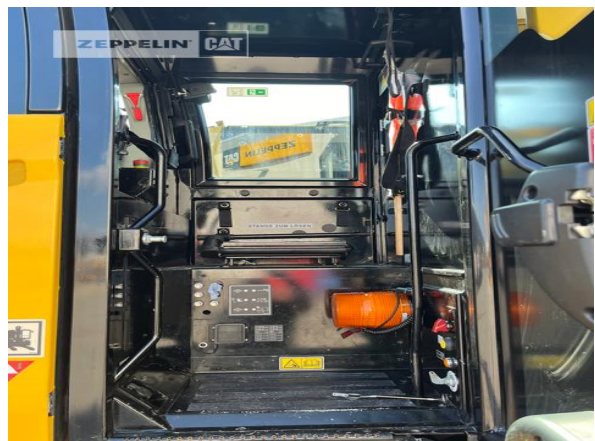
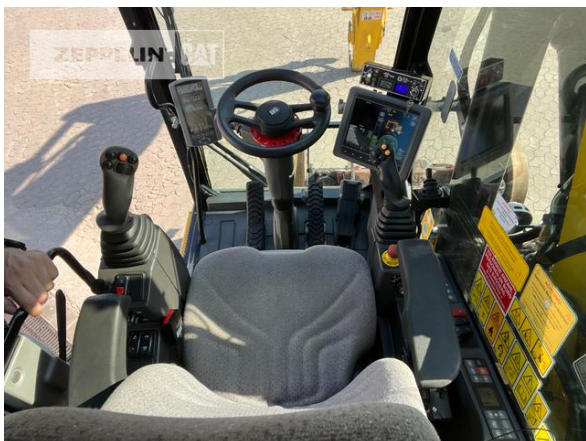


**Cat M323F**  
Serial No.: RH600144





**Cat M323F**  
Serial No.: RH600144



**ZEPELIN**



**Cat M323F**  
Serial No.: RH600144

