

Cat M323F
 Serial No.: RH300214



Zeppelin Baumaschinen
Zeppelin Baumaschinen GmbH Niederlassung
Osnabrück
 Zum Attersee 10
 49076 Osnabrück
 Germany
<https://www.zeppelin-cat.de/en/>

Thomas Wolthaus
 Phone: +49 5411219435
 Fax: +49 5411219444
 Mobile: +49 1741639009
thomas.wolthaus@zeppelin.com

Philipp Westhoff
 Mobile: +49 1712342639
philipp.westhoff@zeppelin.com

Manufacturer	Cat
Category	Rail-road excavators
Year	2019
Hours	5.608
kind of cabin	cabin ROPS
boom	adjustable boom hydr.
grapple line	yes
hydraulic lines	lines for hammer/shear
kind of tires	double tires
tires condition front left	50 %
tires condition front right	50 %
tires condition rear left	50 %
tires condition rear right	50 %
tires filling	air
quick coupler	quick coupler hydraulic
quick coupler type	OQ 70/55 Rail
auto lubrication	yes
rear view camera	yes
Operating Weight	23,9 t
Engine Power	117 kW (160 HP)
air conditioning	yes

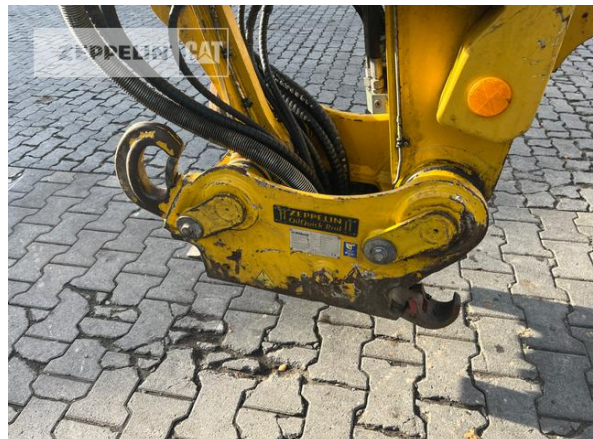
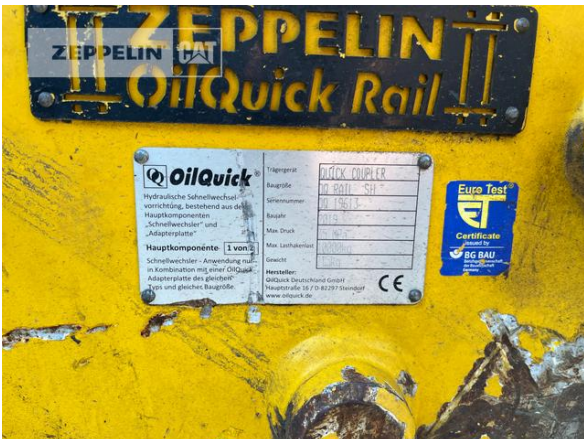
Net price **183.000,00 EUR (excl. VAT)**
Terms of delivery **FCA Zeppelin branch Osnabrück**

This offer is without obligation. The offer is based on our General Terms and Conditions of Sale and Delivery. Changes to equipment and accessories required for technical reasons may be made at any time. Subject to errors, changes and intermediate sale. Statutory value-added tax shall be added to all price.

Cat M323F
Serial No.: RH300214



Cat M323F
Serial No.: RH300214



Cat M323F
Serial No.: RH300214



Cat M323F
 Serial No.: RH300214



Kleinwagen
 Nr. 99 80 9902 052 - 6 / D-WITTF
 Art: Zweiwegebagger Caterpillar M323 F
 WITTFELD GmbH, Hansastr. 83, 49134 Wallenhorst
 Eigengewicht: 23.4 t Nutzlast: - t
 Bremse: Kfz.-Bremse u. Waggonbremsanlage
 Zul. Anhängelast: 220 T*
 Zur Mitfahrt zugel. Personenzahl: 1 Hg: 20 km/h

<input checked="" type="checkbox"/>	6	REV	Caterpillar	09.04.19
	nächste REV		08.04.25	

Darf nicht in Züge eingestellt werden
 Abstoßen und Abtaufenlassen verboten
 Hinterer Schwenkradius 1566 mm

* Siehe Bremslastentafel im Führerhaus

Neigung	Zul.	Geschwindigkeit in km/h bei der Fahrt als			
10 ‰	20	KI mit	t	SKI	-
25 ‰	20	ungebr.	t	(ohne	-
40 ‰	20	Anhänge-	t	Brems-	-
		last von		berechn.)	



Cat M323F

Serial No.: RH300214

