

**Cat M320F**

Serial No.: F2W00519

**Zeppelin Baumaschinen**  
**Zeppelin Baumaschinen GmbH Niederlassung**  
**Böblingen**Hanns-Klemm-Str. 16  
71034 Böblingen  
Germany<https://www.zeppelin-cat.de/en/>

Mikhail Brychkov

Phone: +49 7031640514

Mobile: +49 15152214560

[zbm-gm080@zeppelin.com](mailto:zbm-gm080@zeppelin.com)**Manufacturer****Cat****Category****Mobile Excavators****Year****2016****Hours****8.943**

kind of cabin

cabin ROPS

boom

adjustable boom hydr.

kind of stick

standard

stick lenght

2.800 mm

grapple line

yes

hydraulic lines

lines for hammer/shear

kind of tires

double tires

tires condition front left

10 %

tires condition front right

10 %

tires condition rear left

10 %

tires condition rear right

10 %

manufacturer tires

Bridgestone

tires filling

air

tires size

11.00-20 /10.00-20

auto lubrication

yes

rear view camera

yes

size class

0,8 cbm

Operating Weight

19,7 t

Engine Power

125 kW (171 HP)

air conditioning

yes

**Net price****79.000,00 EUR (excl. VAT)****Terms of delivery****FCA Zeppelin branch Böblingen**

This offer is without obligation. The offer is based on our General Terms and Conditions of Sale and Delivery. Changes to equipment and accessories required for technical reasons may be made at any time. Subject to errors, changes and intermediate sale. Statutory value-added tax shall be added to all price.

**ZEPPELIN**



**Cat M320F**  
Serial No.: F2W00519





**Cat M320F**  
Serial No.: F2W00519



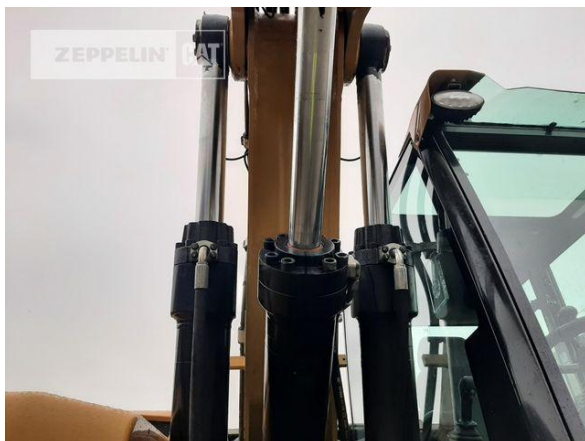


**Cat M320F**  
Serial No.: F2W00519



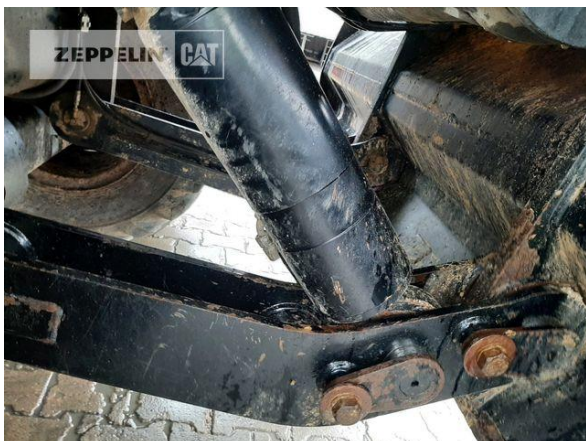


**Cat M320F**  
Serial No.: F2W00519



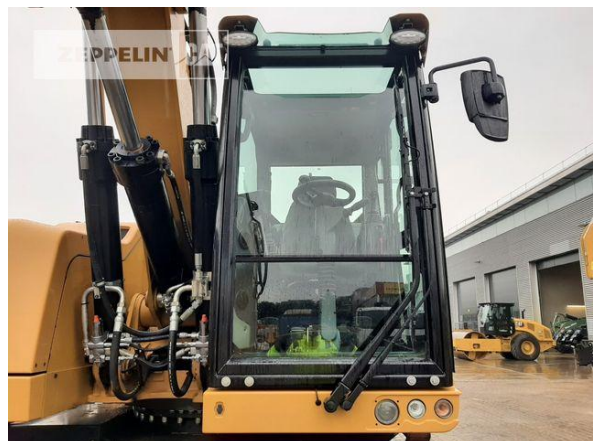


**Cat M320F**  
Serial No.: F2W00519

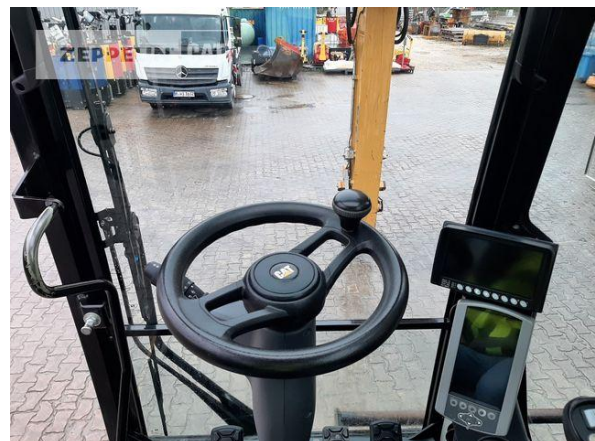
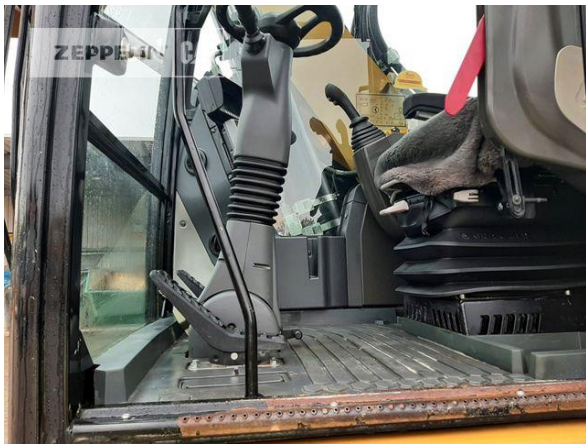




**Cat M320F**  
Serial No.: F2W00519



**Cat M320F**  
Serial No.: F2W00519





**Cat M320F**  
Serial No.: F2W00519

