

Cat M316F
 Serial No.: FB600404



Zeppelin Baumaschinen
Bereich Konzernkunden
 Graf-Zeppelin-Platz 1
 85748 Garching bei München
 Germany
<https://www.zeppelin-cat.de/en/>

Mathias Stemmer
 Phone: +49 8932197550
 Fax: +49 8932197280
 Mobile: +49 1721334554
mathias.stemmer@zeppelin.com

Manufacturer	Cat
Category	Mobile Excavators
Year	2018
Hours	8.043
kind of cabin	cabin ROPS
boom	adjustable boom hydr.
kind of stick	standard
stick lenght	2.400 mm
grapple line	yes
hydraulic lines	lines for hammer/shear
outriggers / blade	blade
kind of tires	double tires
tires condition front left	70 %
tires condition front right	70 %
tires condition rear left	50 %
tires condition rear right	50 %
tires filling	air
tires size	10.00-20
quick coupler	quick coupler hydraulic
quick coupler type	OilQuick OQ70/55
auto lubrication	yes
rear view camera	yes
Operating Weight	17,2 t
Engine Power	110 kW (150 HP)
air conditioning	yes
equipment	Standort/location: Eschweiler, EPA

The logo for Zeppelin, featuring the word "ZEPPELIN" in a bold, black, sans-serif font on a yellow rectangular background.

Cat M316F

Serial No.: FB600404

Net price

89.000,00 EUR (excl. VAT)

Terms of delivery

FCA Zeppelin branch Konzernkunden

This offer is without obligation. The offer is based on our General Terms and Conditions of Sale and Delivery. Changes to equipment and accessories required for technical reasons may be made at any time. Subject to errors, changes and intermediate sale. Statutory value-added tax shall be added to all price.

Cat M316F
Serial No.: FB600404



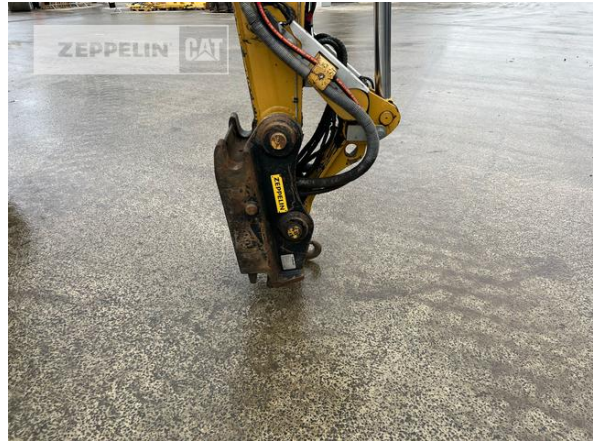
Cat M316F
Serial No.: FB600404



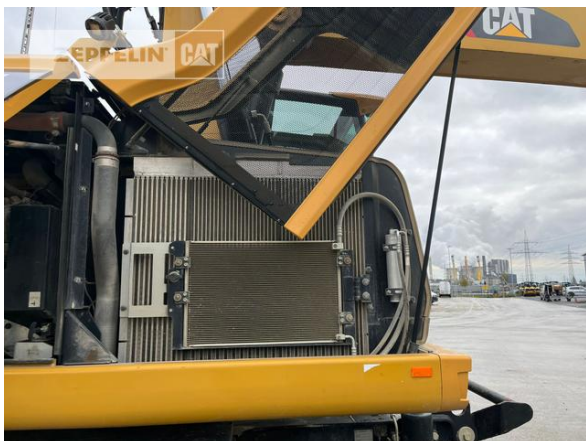
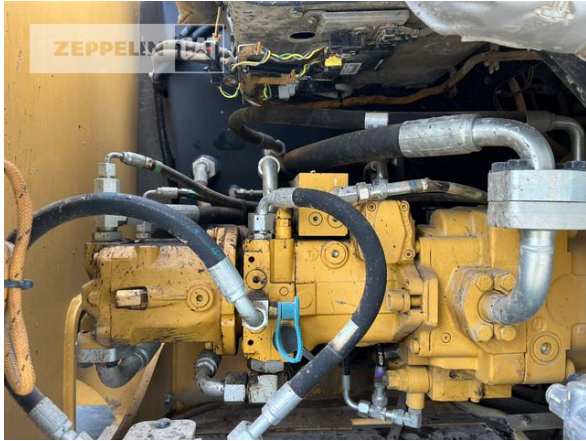
Cat M316F
Serial No.: FB600404



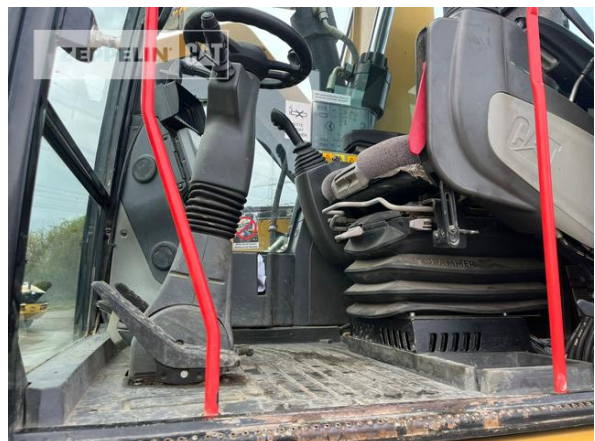
Cat M316F
Serial No.: FB600404



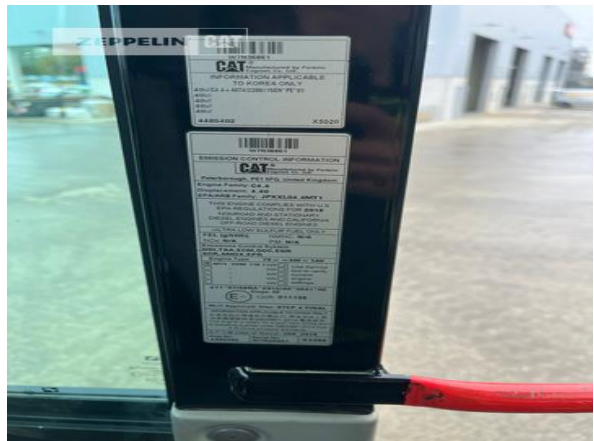
Cat M316F
Serial No.: FB600404



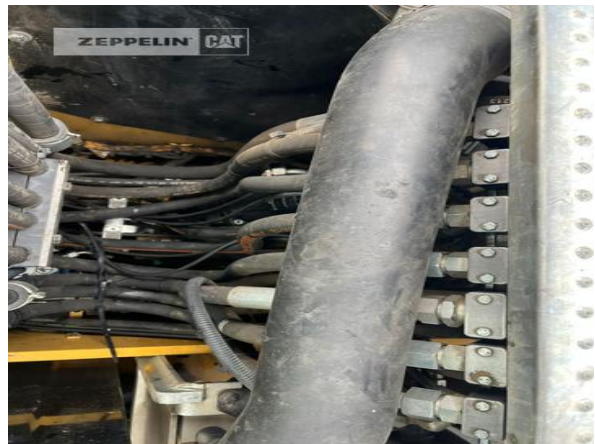
Cat M316F
Serial No.: FB600404



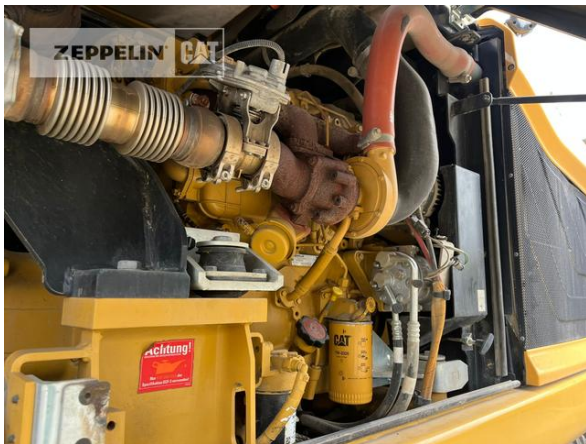
Cat M316F
Serial No.: FB600404



Cat M316F
Serial No.: FB600404



Cat M316F
Serial No.: FB600404



Cat M316F
Serial No.: FB600404

