

Cat M316F
 Serial No.: FB600273



Zeppelin Baumaschinen
Zeppelin Baumaschinen GmbH Niederlassung
Böblingen
 Hanns-Klemm-Str. 16
 71034 Böblingen
 Germany
<https://www.zeppelin-cat.de/en/>

Mikhail Brychkov
 Phone: +49 7031640514
 Mobile: +49 15152214560
zbm-gm080@zeppelin.com

Manufacturer	Cat
Category	Mobile Excavators
Year	2017
Hours	6.711
kind of cabin	cabin ROPS
boom	adjustable boom hydr.
kind of stick	standard
stick lenght	2.400 mm
grapple line	yes
hydraulic lines	lines for hammer/shear
outriggers / blade	blade
kind of tires	double tires
tires condition front left	70 %
tires condition front right	60 %
tires condition rear left	70 %
tires condition rear right	70 %
manufacturer tires	special bucket
tires filling	air
tires size	Camso 10.00-20
quick coupler	quick coupler hydraulic
quick coupler type	OQ70/55
auto lubrication	Beka-Max
rear view camera	yes
Operating Weight	17,2 t
Engine Power	110 kW (150 HP)
air conditioning	yes
equipment	CAT BIO HYDO ADVANCED

The logo for Zeppelin, featuring the word "ZEPPELIN" in a bold, black, sans-serif font on a yellow rectangular background.

Cat M316F

Serial No.: FB600273

Net price

85.000,00 EUR (excl. VAT)

Terms of delivery

FCA Zeppelin branch Böblingen

This offer is without obligation. The offer is based on our General Terms and Conditions of Sale and Delivery. Changes to equipment and accessories required for technical reasons may be made at any time. Subject to errors, changes and intermediate sale. Statutory value-added tax shall be added to all price.

ZEPPELIN



Cat M316F
Serial No.: FB600273



ZEPPELIN



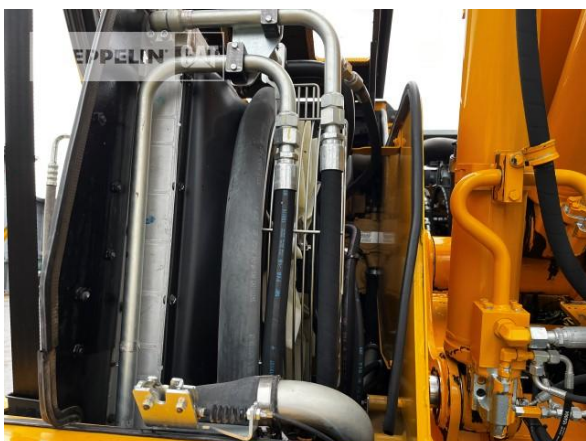
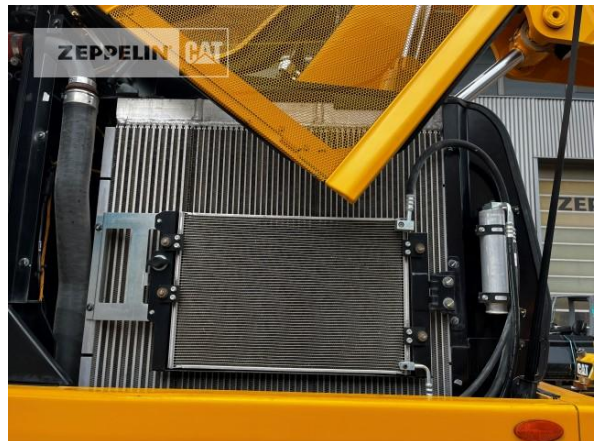
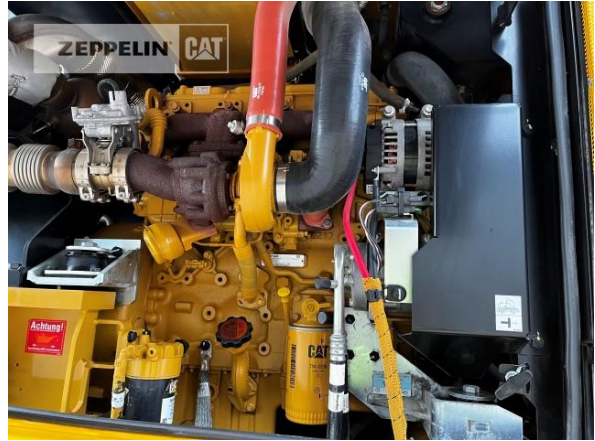
Cat M316F
Serial No.: FB600273



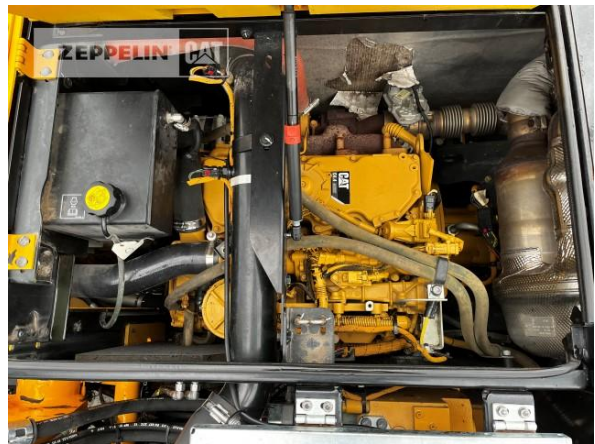
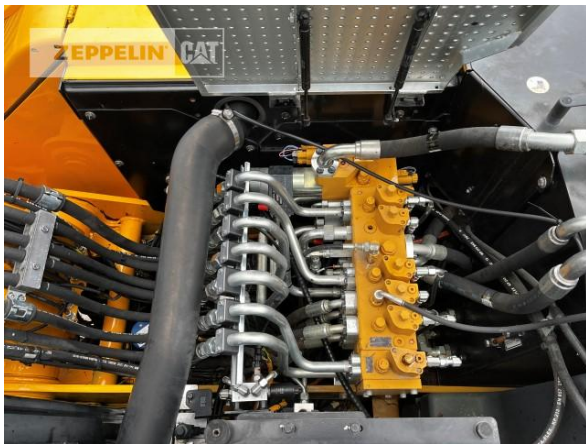
Cat M316F
Serial No.: FB600273



Cat M316F
Serial No.: FB600273



Cat M316F
Serial No.: FB600273



Cat M316F
Serial No.: FB600273



Cat M316F
 Serial No.: FB600273



Cat M316F
 Serial No.: FB600273

SERVICEINFORMATION

ÖLWECHSEL
 Letzter Motorölwechsel bei Betriebsstunden: **6017**

Nächster Motorölwechsel mit Filterwechsel bei Betriebsstunden oder spätestens am: **6500** **09.24**

Aufgefüllte Ölart: **Cat 10W30**

INSPEKTION
 Nächste Inspektion bei Betriebsstunden oder spätestens am: **6500** **09.24**

KÜHLMITTEL
 Kühlerfrostschutz bis Überprüft am: **-33** **09.23**

Ausführende Zeppelin Niederlassung: **198112 Bm Li**

zeppelin-cat.de | zeppelin-cat.at

