

Cat M314-07A

Serial No.: K3H00207


**Zeppelin Baumaschinen
Zeppelin Baumaschinen GmbH Niederlassung
München**

 Graf-Zeppelin-Platz 2
85748 Garching bei München
Germany

<https://www.zeppelin-cat.de/en/>

Lucian-Sorin Ivan

Phone: +49 8932197111

Fax: +49 8932197150

Mobile: +49 15161051231

ZBM-GM.Muenchen@zeppelin.com

Niclas Karremann

Phone: +49 8932197110

Mobile: +49 1715538908

ZBM-GM.Muenchen@zeppelin.com
Manufacturer
Category
Year
Hours
Cat
Mobile Excavators
2021
878

kind of cabin

cabin ROPS

boom

adjustable boom hydr.

kind of stick

standard

stick lenght

2.500 mm

kind of bucket

gp bucket

cutting width

1.200 mm

bucket condition

100 %

grapple line

yes

hydraulic lines

lines for hammer/shear

outriggers / blade

blade and 2 outriggers

kind of tires

double tires

tires condition front left

40 %

tires condition front right

40 %

tires condition rear left

60 %

tires condition rear right

50 %

manufacturer tires

special bucket

tires filling

air

tires size

10.00-20

rook guard roof

yes

quick coupler

quick coupler hydraulic

quick coupler type

CW20S (Schmal)

auto lubrication

yes

rear view camera

yes

Operating Weight

15,3 t

Engine Power

100 kW (136 HP)

air conditioning

yes



Cat M314-07A
Serial No.: K3H00207

Net price
Terms of delivery

Price on Request
FCA Zeppelin branch München

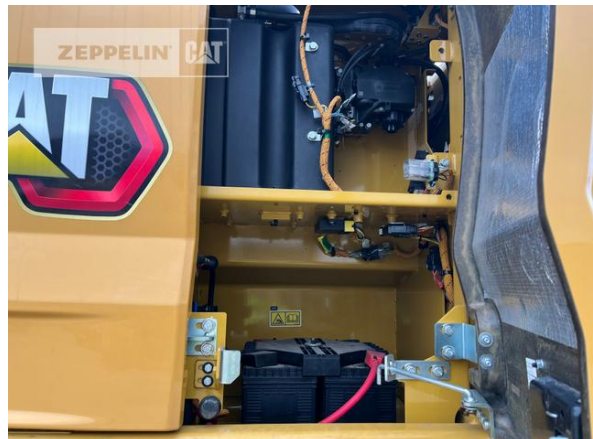
This offer is without obligation. The offer is based on our General Terms and Conditions of Sale and Delivery. Changes to equipment and accessories required for technical reasons may be made at any time. Subject to errors, changes and intermediate sale. Statutory value-added tax shall be added to all price.

Cat M314-07A
Serial No.: K3H00207



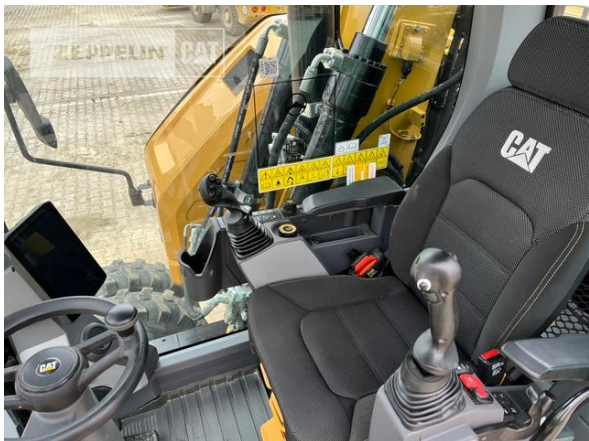
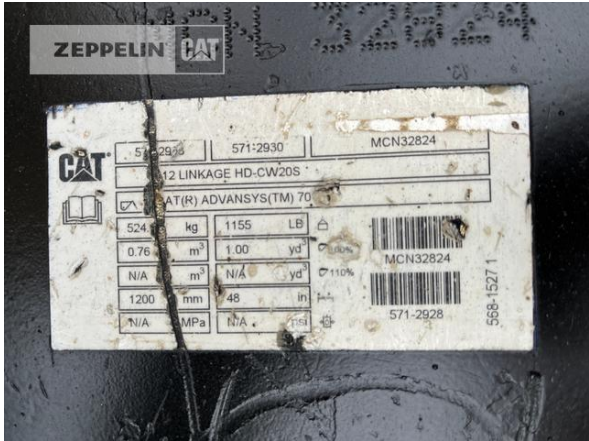
ZEPELIN**CAT**

Cat M314-07A
Serial No.: K3H00207



Cat M314-07A

Serial No.: K3H00207



Cat M314-07A

Serial No.: K3H00207

