

Cat D6TXW

Serial No.: 7C900108



Zeppelin Baumaschinen
Zeppelin Baumaschinen GmbH
Gebrauchtmaschinen Zentrum Alsfeld
Karl-Bröger-Straße 8
36304 Alsfeld
Germany
<https://www.zeppelin-cat.de/en/>

Roger Immig
Phone: +49 6631960126
Fax: +49 6631960140
Mobile: +49 1738902692
roger.immig@zeppelin.com

Manufacturer	Cat
Category	Dozers
Year	2017
Hours	9.212
undercarriage	delta tracks
blade type	PAT blade (6way)
blade capacity	5,1 cbm
blade wide	4.160 mm
blade condition	50 %
Ripper	three shank ripper
ripper condition	60 %
ripper valve	yes
track shoes (pads) condition	80 %
undercarriage sprockets	70 %
undercarriage idlers back	60 %
undercarriage idlers front	60 %
undercarriage track rollers	60 %
undercarriage track links	80 %
undercarriage track bushings	80 %
undercarriage carrier rollers	50 %
size class	5,6 cbm
Operating Weight	20,8 t
Engine Power	149 kW (203 HP)
air conditioning	yes

Net price**175.000,00 EUR (excl. VAT)****Terms of delivery****FCA Zeppelin branch Gebrauchtmaschinen Zentrum Alsfeld**

This offer is without obligation. The offer is based on our General Terms and Conditions of Sale and Delivery. Changes to equipment and accessories required for technical reasons may be made at any time. Subject to errors, changes and intermediate sale. Statutory value-added tax shall be added to all price.

Cat D6TXW

Serial No.: 7C900108



Cat D6TXW
Serial No.: 7C900108



Cat D6TXW
Serial No.: 7C900108

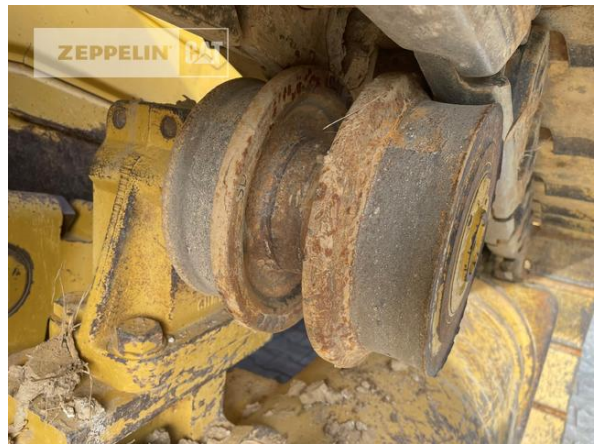


Cat D6TXW
Serial No.: 7C900108



Cat D6TXW

Serial No.: 7C900108



Cat D6TXW
Serial No.: 7C900108



Cat D6TXW
Serial No.: 7C900108

