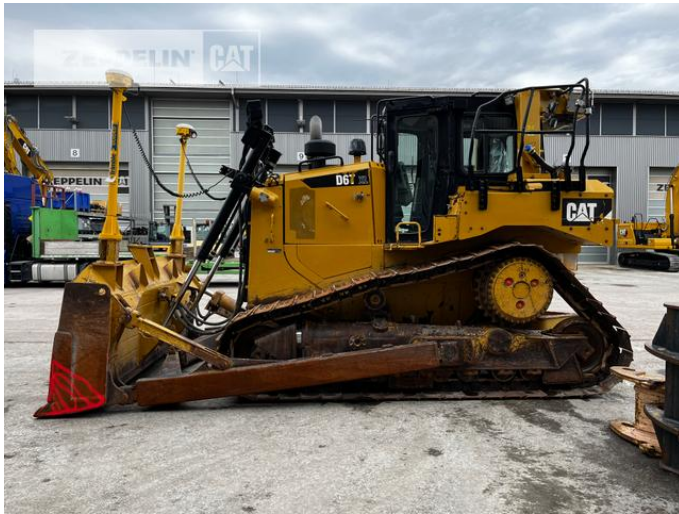


Cat D6TXL

Serial No.: MEL00135



Zeppelin Baumaschinen
Zeppelin Baumaschinen GmbH Niederlassung
Böblingen
Hanns-Klemm-Str. 16
71034 Böblingen
Germany
<https://www.zeppelin-cat.de/en/>

Mikhail Brychkov
Phone: +49 7031640514
Mobile: +49 15152214560
zbm-gm080@zeppelin.com

Manufacturer
Category
Year
Hours

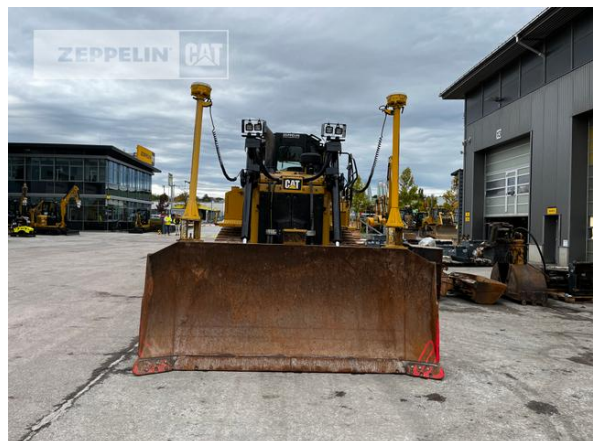
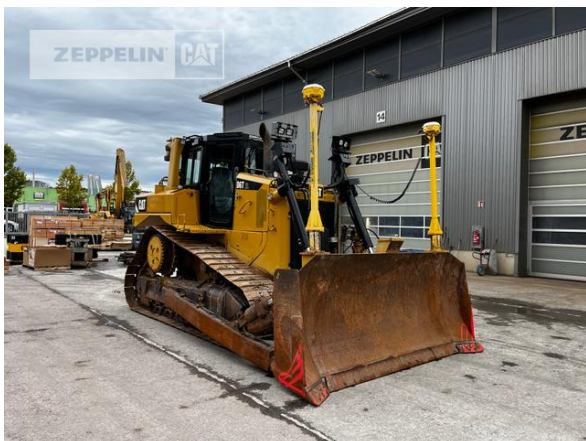
Cat
Dozers
2015
12.335

undercarriage	delta tracks
blade type	SU blade
blade wide	3.200 mm
blade condition	40 %
ripper valve	yes
track shoes (pads) wide	610 mm
track shoes (pads) condition	30 %
undercarriage sprockets	70 %
undercarriage idlers back	70 %
undercarriage idlers front	60 %
undercarriage track rollers	70 %
undercarriage track links	60 %
undercarriage track bushings	60 %
undercarriage carrier rollers	50 %
laser control	3
size class	5,6 cbm
Operating Weight	21 t
Engine Power	152 kW (208 HP)
air conditioning	yes
equipment	Sitech 3D Steuerung GCS900 Display Masten und Töpfe

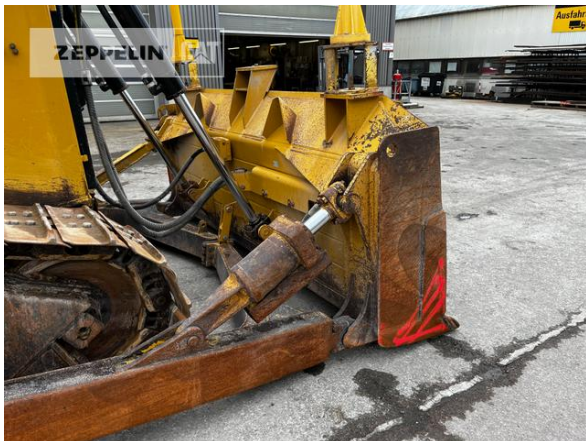
Net price**99.000,00 EUR (excl. VAT)****Terms of delivery****FCA Zeppelin branch Böblingen**

This offer is without obligation. The offer is based on our General Terms and Conditions of Sale and Delivery. Changes to equipment and accessories required for technical reasons may be made at any time. Subject to errors, changes and intermediate sale. Statutory value-added tax shall be added to all price.

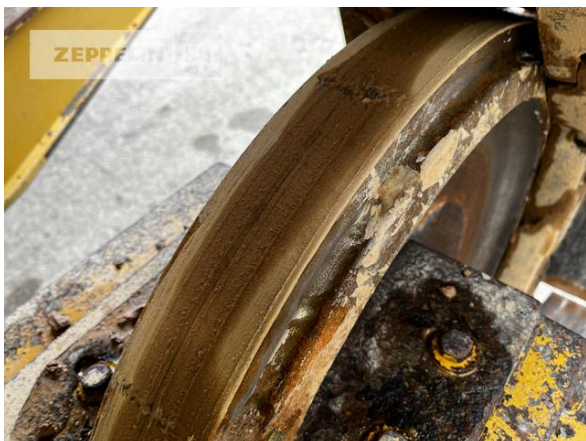
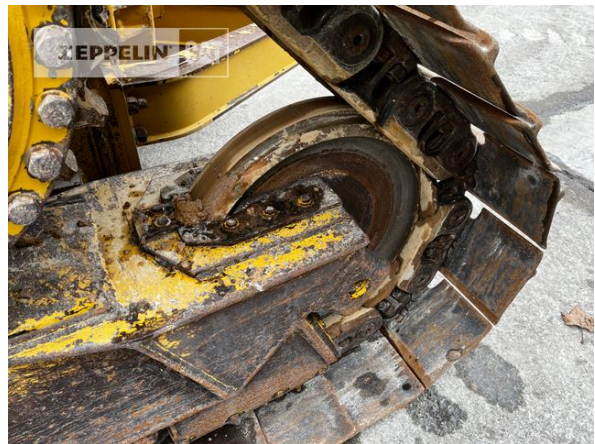
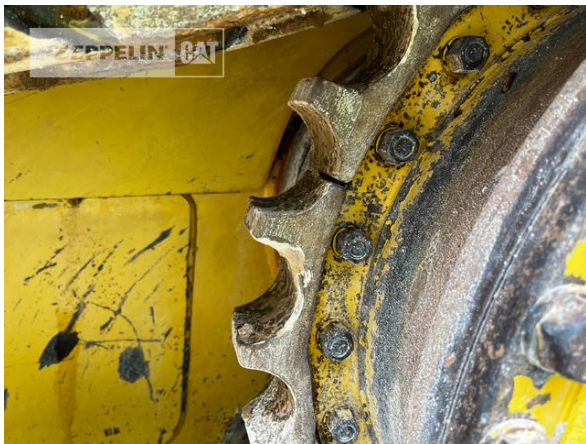
Cat D6TXL
Serial No.: MEL00135



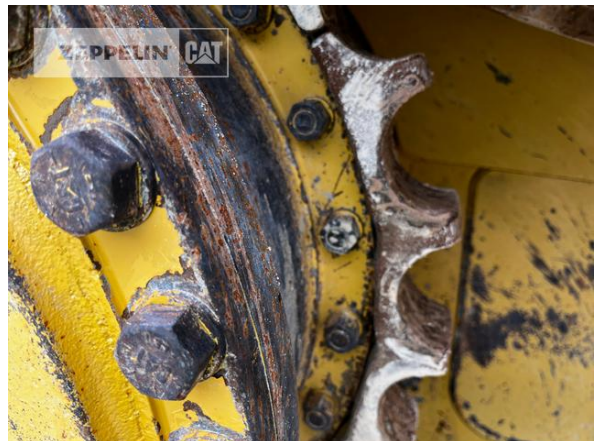
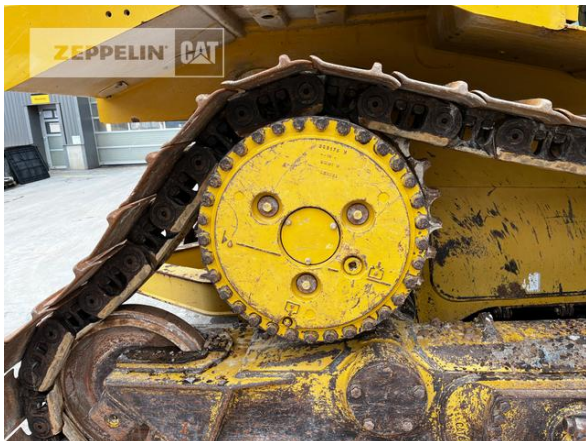
Cat D6TXL
Serial No.: MEL00135



Cat D6TXL
Serial No.: MEL00135

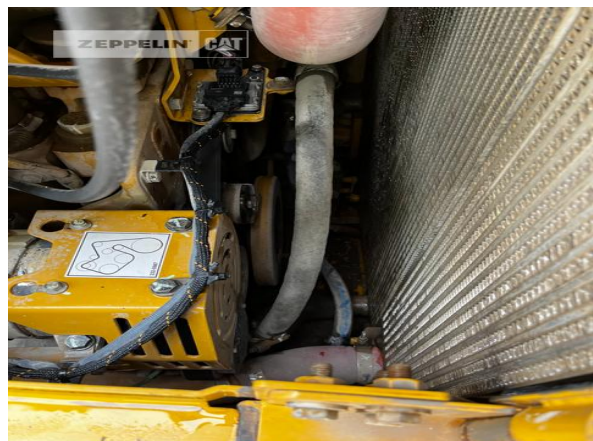


Cat D6TXL
Serial No.: MEL00135

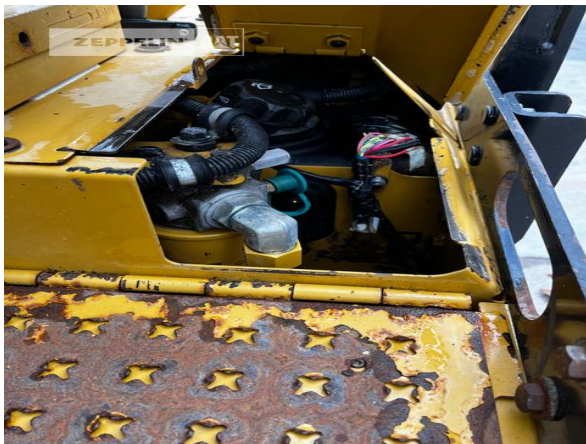


Cat D6TXL

Serial No.: MEL00135



Cat D6TXL
Serial No.: MEL00135



Cat D6TXL
Serial No.: MEL00135



Cat D6TXL
 Serial No.: MEL00135

