

Cat D6NMP

Serial No.: PBA00889

**Zeppelin Baumaschinen
Zeppelin Baumaschinen GmbH Niederlassung
Bremen**Zeppelin-Str. 2
28832 Achim bei Bremen
Germany<https://www.zeppelin-cat.de/en/>

Michael Bohlmann

Phone: +49 4202516111

Fax: +49 4202516119

Mobile: +49 1728955977

michael.bohlmann@zeppelin.com

Philipp Westhoff

Mobile: +49 1712342639

philipp.westhoff@zeppelin.com**Manufacturer****Cat****Category****Dozers****Year****2013****Hours****9.839**

undercarriage

low ground pressure LGP

blade type

PAT blade (6way)

blade condition

30 %

ripper valve

yes

track shoes (pads) wide

835 mm

track shoes (pads) condition

25 %

undercarriage sprockets

65 %

undercarriage idlers back

60 %

undercarriage idlers front

60 %

undercarriage track rollers

60 %

undercarriage track links

60 %

undercarriage track bushings

50 %

undercarriage carrier rollers

60 %

size class

3,9 cbm

Operating Weight

19,5 t

Engine Power

111 kW (152 HP)

air conditioning

yes

equipment

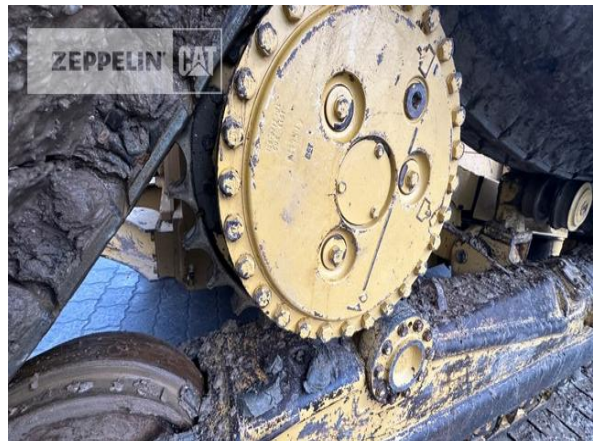
die Maschine kann eventuell gegen Aufpreis mit einer gebrauchten 3 D
Steuerung verkauft werden**Net price****82.500,00 EUR (excl. VAT)****Terms of delivery****FCA Zeppelin branch Bremen**

This offer is without obligation. The offer is based on our General Terms and Conditions of Sale and Delivery. Changes to equipment and accessories required for technical reasons may be made at any time. Subject to errors, changes and intermediate sale. Statutory value-added tax shall be added to all price.

Cat D6NMP
Serial No.: PBA00889



Cat D6NMP
Serial No.: PBA00889



Cat D6NMP

Serial No.: PBA00889

