

**Cat D6NMP**  
 Serial No.: MG502042



**Zeppelin Baumaschinen**  
**Zeppelin Baumaschinen GmbH Niederlassung**  
**Hamburg**  
 Biedenkamp 2  
 21509 Glinde  
 Germany  
<https://www.zeppelin-cat.de/en/>

Thomas Woidelko  
 Phone: +49 4076119111  
 Fax: +49 4076119100  
 Mobile: +49 15127235975  
[thomas.woidelko@zeppelin.com](mailto:thomas.woidelko@zeppelin.com)

Philipp Westhoff  
 Mobile: +49 1712342639  
[philipp.westhoff@zeppelin.com](mailto:philipp.westhoff@zeppelin.com)

<b>Manufacturer</b>	<b>Cat</b>
<b>Category</b>	<b>Dozers</b>
<b>Year</b>	<b>2019</b>
<b>Hours</b>	<b>4.122</b>
undercarriage	low ground pressure LGP
blade type	PAT blade (6way)
blade condition	60 %
track shoes (pads) wide	840 mm
track shoes (pads) condition	30 %
undercarriage sprockets	30 %
undercarriage track rollers	20 %
undercarriage track links	20 %
undercarriage track bushings	20 %
undercarriage carrier rollers	20 %
size class	3,7 cbm
Operating Weight	18,2 t
Engine Power	111 kW (152 HP)
air conditioning	yes

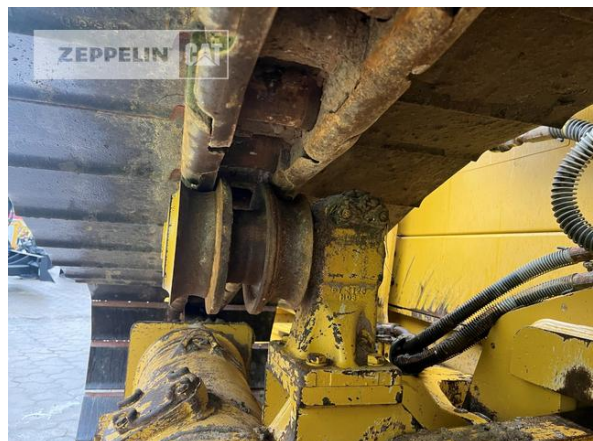
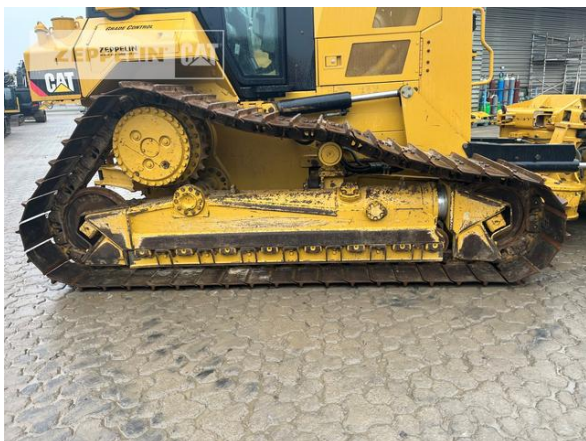
**Net price** **179.000,00 EUR (excl. VAT)**  
**Terms of delivery** **FCA Zeppelin branch Hamburg**

This offer is without obligation. The offer is based on our General Terms and Conditions of Sale and Delivery. Changes to equipment and accessories required for technical reasons may be made at any time. Subject to errors, changes and intermediate sale. Statutory value-added tax shall be added to all price.

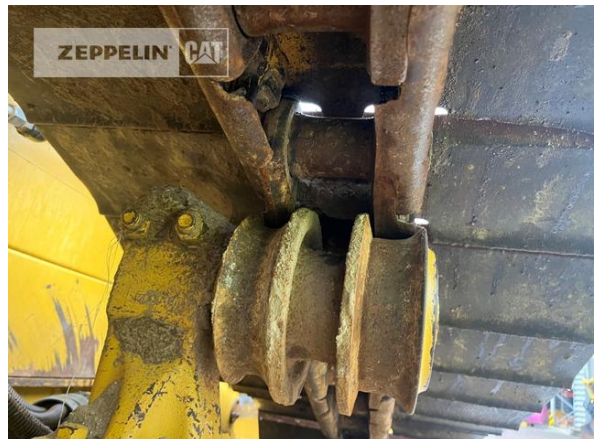
**Cat D6NMP**  
Serial No.: MG502042



**Cat D6NMP**  
Serial No.: MG502042



**Cat D6NMP**  
Serial No.: MG502042



**Cat D6NMP**  
Serial No.: MG502042

