

Cat 980M

Serial No.: MK210345

**Zeppelin Baumaschinen**
Zeppelin Baumaschinen GmbH Niederlassung
BerlinZeppelinring 23-25
15749 Mittenwalde
Germany<https://www.zeppelin-cat.de/en/>

Christian Reinert

Phone: +49 3375903411

Mobile: +49 1756169727

Christian.Reinert@zeppelin.com

René Hirschmann

Phone: +49 3375903412

Fax: +49 3375903450

Mobile: +49 1733909955

rene.hirschmann@zeppelin.com**Manufacturer****Cat****Category****Wheel Loaders****Year****2017****Hours****6.505**

kind of cabin

cabin ROPS

bucket type

gp-bucket with cutting edge

actual bucket volume

7 cbm

bucket condition

55 %

tires condition front left

60 %

tires condition front right

60 %

tires condition rear left

50 %

tires condition rear right

50 %

manufacturer tires

Michelin

tires size

29.5 R25 XL DD 2A

rear view camera

yes

size class

5,7 cbm

Operating Weight

30,1 t

Engine Power

288 kW (392 HP)

air conditioning

yes

reverse warning device

yes

Net price**195.000,00 EUR (excl. VAT)****Terms of delivery****FCA Zeppelin branch Berlin**

This offer is without obligation. The offer is based on our General Terms and Conditions of Sale and Delivery. Changes to equipment and accessories required for technical reasons may be made at any time. Subject to errors, changes and intermediate sale. Statutory value-added tax shall be added to all price.

Cat 980M

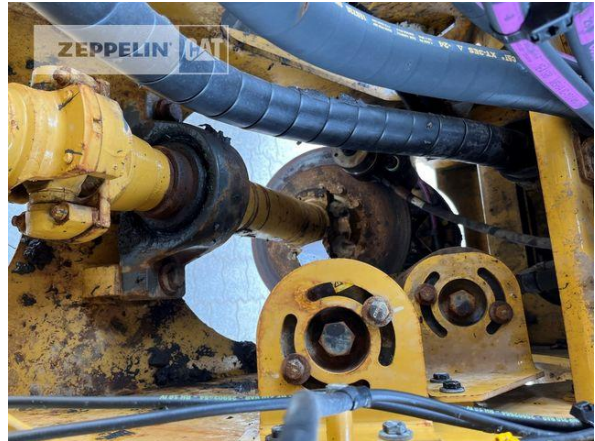
Serial No.: MK210345



Cat 980M
Serial No.: MK210345



Cat 980M
Serial No.: MK210345



Cat 980M
Serial No.: MK210345



Cat 980M
Serial No.: MK210345

