

**Cat 926M**  
 Serial No.: LTE07983



**Zeppelin Baumaschinen**  
**Zeppelin Baumaschinen GmbH Niederlassung**  
**Böblingen**  
 Hanns-Klemm-Str. 16  
 71034 Böblingen  
 Germany  
<https://www.zeppelin-cat.de/en/>

Mikhail Brychkov  
 Phone: +49 7031640514  
 Mobile: +49 15152214560  
[zbm-gm080@zeppelin.com](mailto:zbm-gm080@zeppelin.com)

<b>Manufacturer</b>	<b>Cat</b>
<b>Category</b>	<b>Wheel Loaders</b>
<b>Year</b>	<b>2020</b>
<b>Hours</b>	<b>7.195</b>
kind of cabin	cabin ROPS
bucket type	gp-bucket with cutting edge
actual bucket volume	2,5 cbm
bucket condition	60 %
high - lift	yes
3rd hydr. line	yes
tires condition front left	40 %
tires condition front right	45 %
tires condition rear left	60 %
tires condition rear right	60 %
manufacturer tires	Michelin
tires filling	air
tires size	20.5R25
steering	conventional steering
auto lubrication	yes
rear view camera	yes
size class	5 cbm
Operating Weight	12,9 t
Engine Power	125 kW (170 HP)
air conditioning	yes
reverse warning device	yes
equipment	Steinschlagschutz Front

 ZEPPELIN CAT

**Cat 926M**

Serial No.: LTE07983

**Net price**

**68.000,00 EUR (excl. VAT)**

**Terms of delivery**

**FCA Zeppelin branch Böblingen**

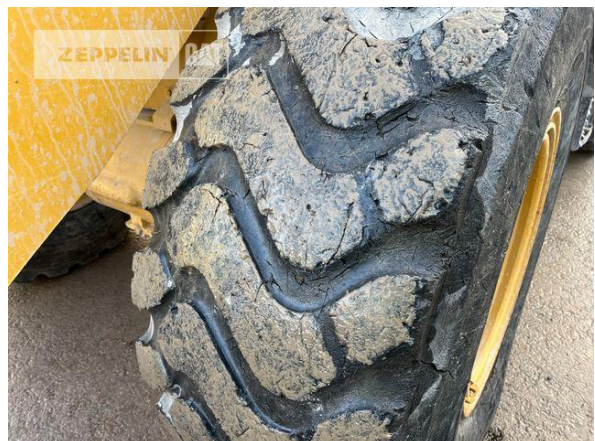
This offer is without obligation. The offer is based on our General Terms and Conditions of Sale and Delivery. Changes to equipment and accessories required for technical reasons may be made at any time. Subject to errors, changes and intermediate sale. Statutory value-added tax shall be added to all price.

**Cat 926M**  
Serial No.: LTE07983



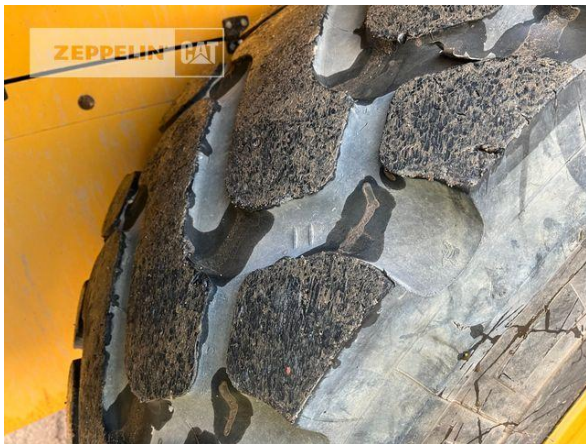


**Cat 926M**  
Serial No.: LTE07983



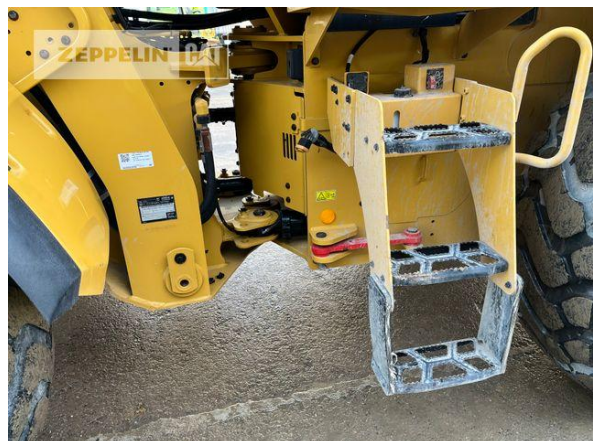
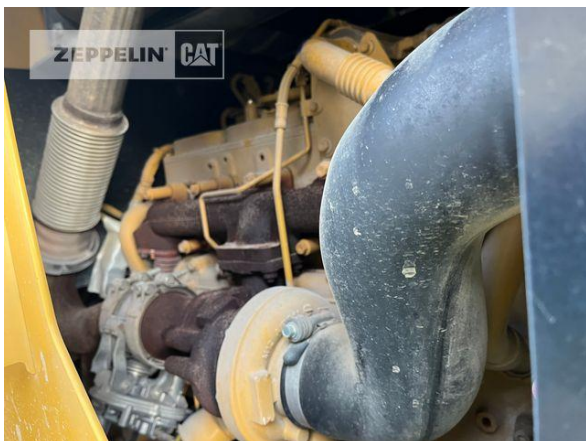


**Cat 926M**  
Serial No.: LTE07983



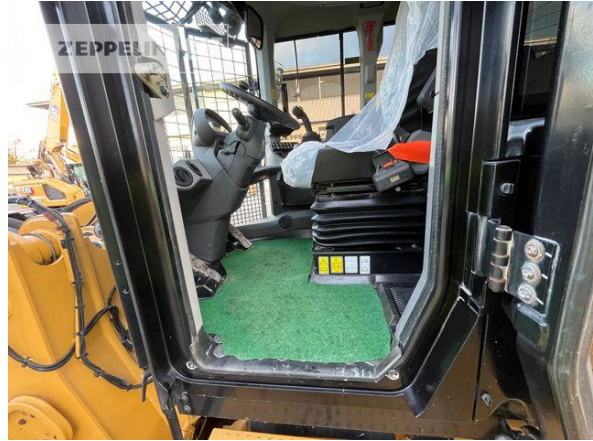


**Cat 926M**  
Serial No.: LTE07983





**Cat 926M**  
Serial No.: LTE07983





**Cat 926M**  
Serial No.: LTE07983





**Cat 926M**  
Serial No.: LTE07983

