

**Cat 775G**

Serial No.: MJS02483

**Zeppelin Baumaschinen****Bereich Konzernkunden**

Graf-Zeppelin-Platz 1

85748 Garching bei München

Germany

<https://www.zeppelin-cat.de/en/>

Mathias Stemmer

Phone: +49 8932197550

Fax: +49 8932197280

Mobile: +49 1721334554

[mathias.stemmer@zeppelin.com](mailto:mathias.stemmer@zeppelin.com)**Manufacturer****Cat****Category****Off-Highway Trucks****Year****2023****Hours****4.762**

body type

Flat-floor Bed

body capacity

42,2 cbm

Payload

71,5 t

body condition

100 %

tires condition front left

55 %

tires condition front right

55 %

tires condition rear left

35 %

tires condition rear right

35 %

manufacturer tires

Bridgestone

tires filling

air

tires size

24.00R35 VSteel Traction Premium

rear view camera

yes

size class

41,9 cbm

Operating Weight

56 t

Engine Power

589 kW (802 HP)

air conditioning

yes

equipment

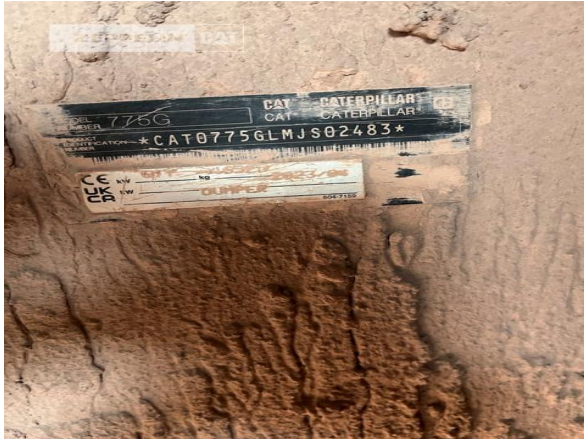
Mulde neu/new body, EU Abgasstufe V/emissions level EPA Tier 4 final

**Net price****Price on Request****Terms of delivery****FCA Zeppelin branch Konzernkunden**

This offer is without obligation. The offer is based on our General Terms and Conditions of Sale and Delivery. Changes to equipment and accessories required for technical reasons may be made at any time. Subject to errors, changes and intermediate sale. Statutory value-added tax shall be added to all price.

**Cat 775G**

Serial No.: MJS02483



**Cat 775G**  
Serial No.: MJS02483

