

Cat 336-07A

Serial No.: WFF10002

**Zeppelin Baumaschinen
Zeppelin Baumaschinen GmbH Niederlassung
Köln**Graf-Zeppelin-Str. 25
51147 Köln
Germany<https://www.zeppelin-cat.de/en/>

Mario Bertram

Phone: +49 2203929111

Mobile: +49 1754157707

mario.bertram@zeppelin.com

Konstantin Wehrwein

Phone: +49 2203929185

Fax: +49 2203929474

Mobile: +49 1718029587

konstantin.wehrwein@zeppelin.com

Manufacturer	Cat
Category	Tracked Excavators
Year	2020
Hours	4.069

kind of cabin	cabin ROPS
boom	mono boom
kind of stick	standard
grapple line	yes
hydraulic lines	lines for hammer/shear
track shoes (pads) wide	850 mm
track shoes (pads) condition	70 %
undercarriage sprockets	70 %
undercarriage idlers	70 %
undercarriage track rollers	70 %
undercarriage track links	70 %
undercarriage track bushings	60 %
undercarriage carrier rollers	70 %
auto lubrication	yes
rear view camera	yes
size class	2,3 cbm
Operating Weight	37,2 t
Engine Power	231 kW (315 HP)
air conditioning	yes

Net price **199.000,00 EUR (excl. VAT)****Terms of delivery** **FCA Zeppelin branch Köln**

This offer is without obligation. The offer is based on our General Terms and Conditions of Sale and Delivery. Changes to equipment and accessories required for technical reasons may be made at any time. Subject to errors, changes and intermediate sale. Statutory value-added tax shall be added to all price.

ZEPELIN



Cat 336-07A
Serial No.: WFF10002



Cat 336-07A
 Serial No.: WFF10002



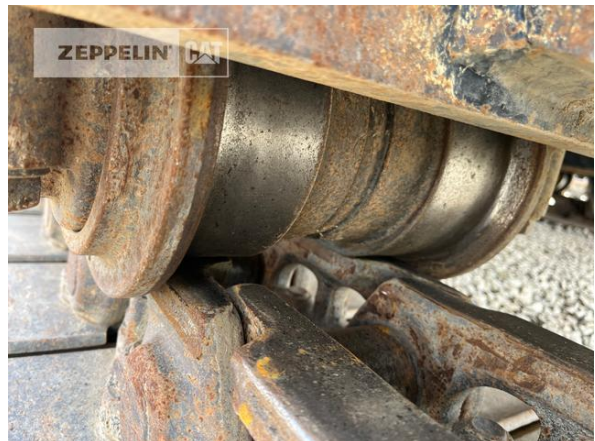
Cat 336-07A

Serial No.: WFF10002



Cat 336-07A

Serial No.: WFF10002

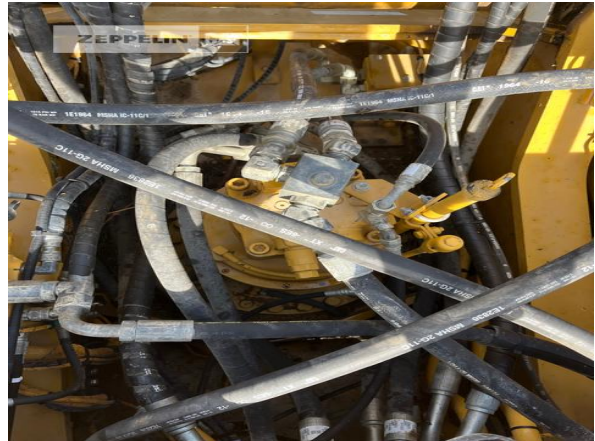


Cat 336-07A

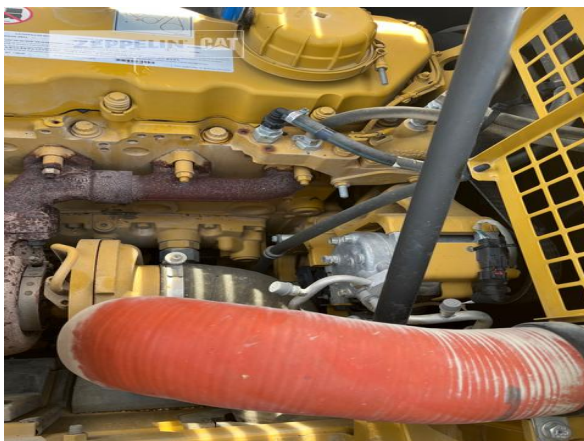
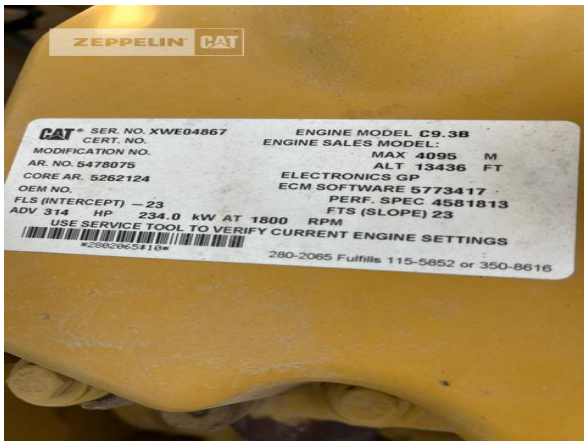
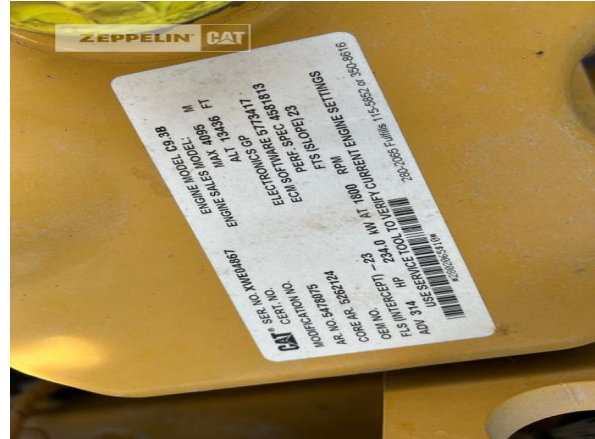
Serial No.: WFF10002



Cat 336-07A
Serial No.: WFF10002



Cat 336-07A
Serial No.: WFF10002



Cat 336-07A
Serial No.: WFF10002

