

Cat 330FLN
 Serial No.: KFA20008



Zeppelin Baumaschinen
Zeppelin Baumaschinen GmbH Niederlassung
Chemnitz

Zeppelinstr 5, Gewerbegebiet Pleißa
 09212 Limbach-Oberfrohna
 Germany

<https://www.zeppelin-cat.de/en/>

Steve Mühlberg

Phone: +49 3520446745

Mobile: +49 1728550688

steve.muehlberg@zeppelin.com

Phillip Uri

Phone: +49 3614933318

Mobile: +49 1722743892

phillip.uri@zeppelin.com

Manufacturer	Cat
Category	Tracked Excavators
Year	2018
Hours	5.717

kind of cabin	cabin ROPS
boom	mono boom
kind of stick	standard
stick lenght	3.200 mm
grapple line	yes
hydraulic lines	lines for hammer/shear
track shoes (pads) wide	600 mm
track shoes (pads) condition	60 %
undercarriage sprockets	50 %
undercarriage idlers	50 %
undercarriage track rollers	40 %
undercarriage track links	50 %
undercarriage track bushings	50 %
undercarriage carrier rollers	50 %
rook guard roof	yes
quick coupler	quick coupler hydraulic
quick coupler type	Lehnhoff HS 25
rear view camera	yes
size class	1,3 cbm
Operating Weight	28,2 t
Engine Power	175 kW (238 HP)
air conditioning	yes
equipment	Maschine wird noch für den Verkauf vorbereitet. 5.500Bh Inspektion durchgeführt

ZEPPELIN**Cat 330FLN**

Serial No.: KFA20008

Net price**133.000,00 EUR (excl. VAT)**

Terms of delivery

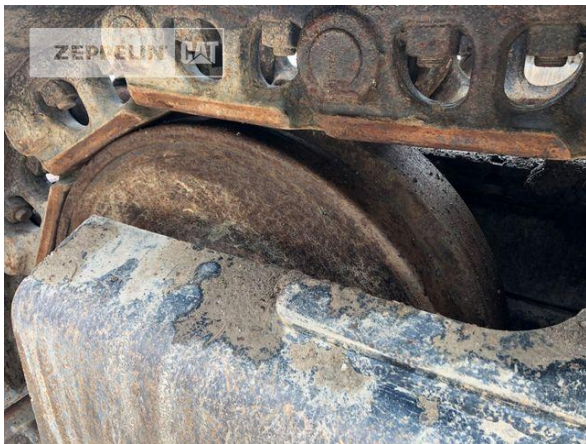
FCA Zeppelin branch Chemnitz

This offer is without obligation. The offer is based on our General Terms and Conditions of Sale and Delivery. Changes to equipment and accessories required for technical reasons may be made at any time. Subject to errors, changes and intermediate sale. Statutory value-added tax shall be added to all price.

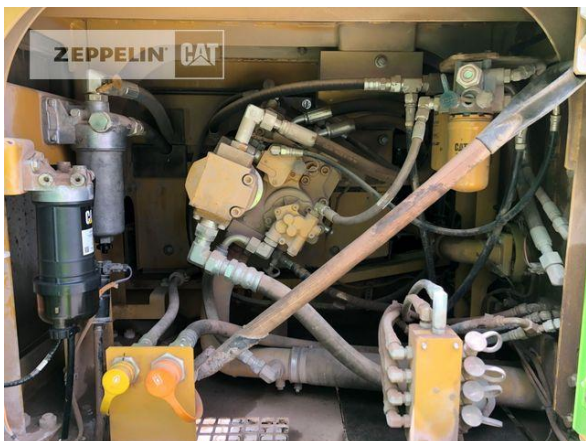
Cat 330FLN
Serial No.: KFA20008



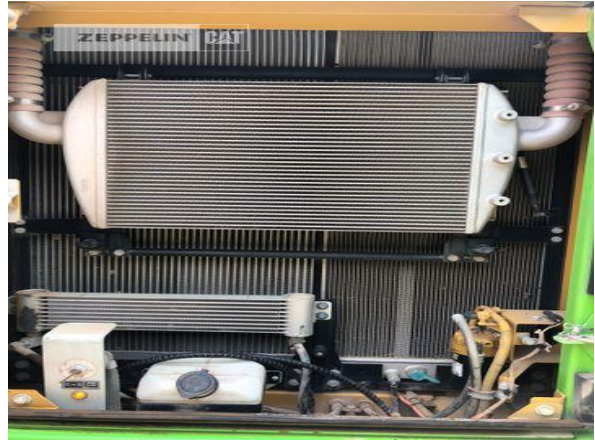
Cat 330FLN
Serial No.: KFA20008



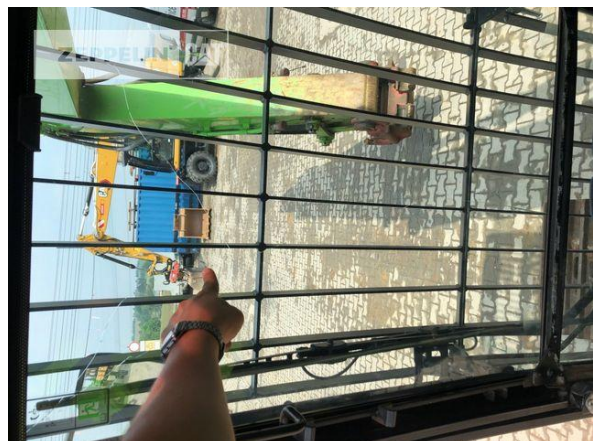
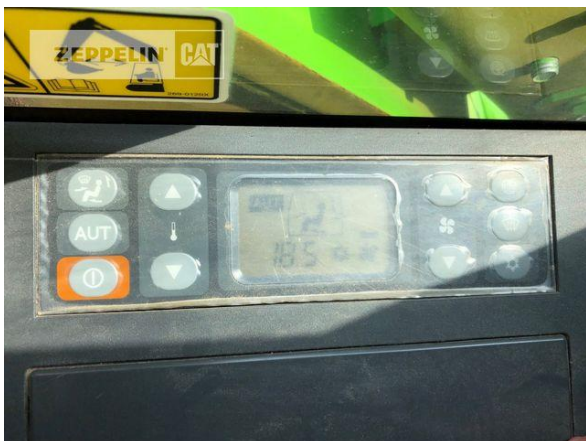
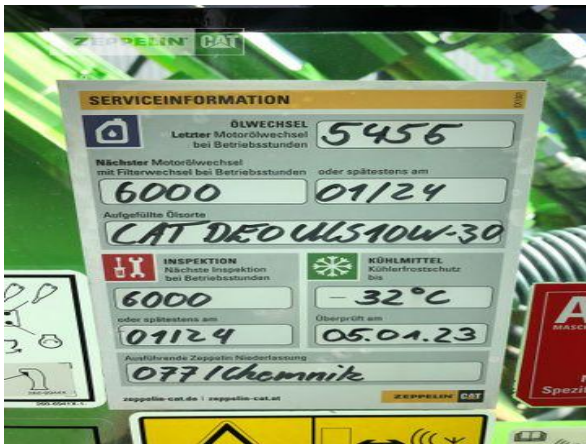
Cat 330FLN
Serial No.: KFA20008



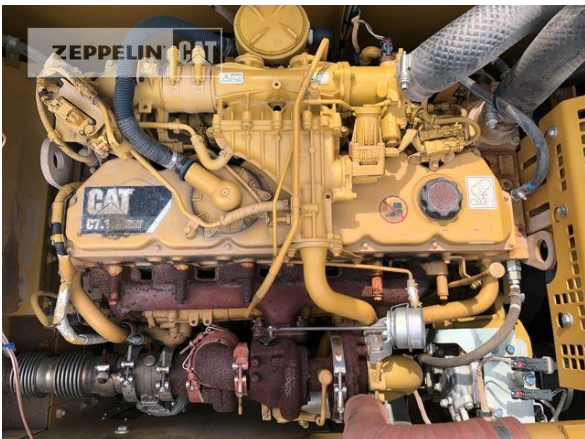
Cat 330FLN
Serial No.: KFA20008



Cat 330FLN
Serial No.: KFA20008



Cat 330FLN
Serial No.: KFA20008



Cat 330FLN
Serial No.: KFA20008

