

**Cat 315-07B**  
 Serial No.: WKX20729



**Zeppelin Baumaschinen**  
**Zeppelin Baumaschinen GmbH Niederlassung**  
**Freiburg**  
 Zeppelinstr. 15  
 79331 Teningen  
 Germany  
<https://www.zeppelin-cat.de/en/>

Tobias Kölbl  
 Phone: +49 7663931129  
 Mobile: +49 1709051967  
[tobias.koelble@zeppelin.com](mailto:tobias.koelble@zeppelin.com)

<b>Manufacturer</b>	<b>Cat</b>
<b>Category</b>	<b>Tracked Excavators</b>
<b>Year</b>	<b>2022</b>
<b>Hours</b>	<b>289</b>
kind of cabin	cabin ROPS
boom	adjustable boom hydr.
kind of stick	standard
stick lenght	2.500 mm
grapple line	yes
hydraulic lines	lines for hammer/shear
track shoes (pads) wide	500 mm
track shoes (pads) condition	95 %
undercarriage sprockets	95 %
undercarriage idlers	95 %
undercarriage track rollers	95 %
undercarriage track links	95 %
undercarriage track bushings	95 %
undercarriage carrier rollers	95 %
quick coupler	quick coupler hydraulic
quick coupler type	CW20
stabilizer blade	yes
rear view camera	yes
size class	0,5 cbm
Operating Weight	15,4 t
Engine Power	81 kW (111 HP)
air conditioning	yes

The logo for Zeppelin, featuring the word "ZEPPELIN" in a bold, black, sans-serif font on a yellow rectangular background.

**Cat 315-07B**

Serial No.: WKX20729

**Net price**

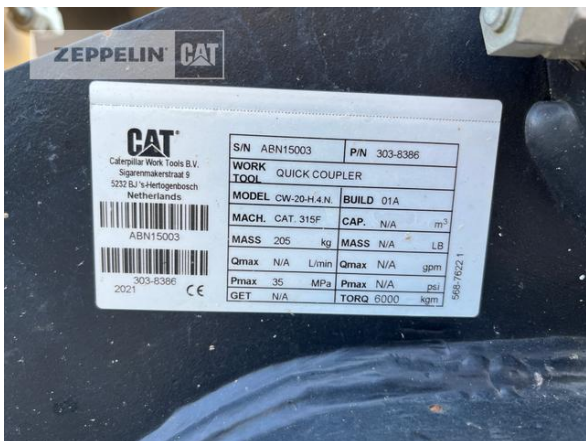
**153.000,00 EUR (excl. VAT)**

**Terms of delivery**

**FCA Zeppelin branch Freiburg**

This offer is without obligation. The offer is based on our General Terms and Conditions of Sale and Delivery. Changes to equipment and accessories required for technical reasons may be made at any time. Subject to errors, changes and intermediate sale. Statutory value-added tax shall be added to all price.

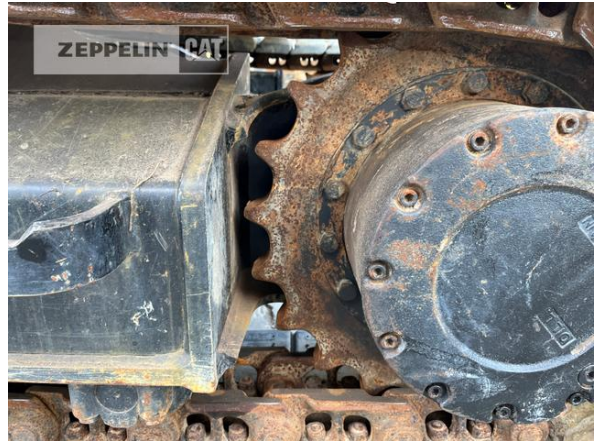
**Cat 315-07B**  
 Serial No.: WKX20729





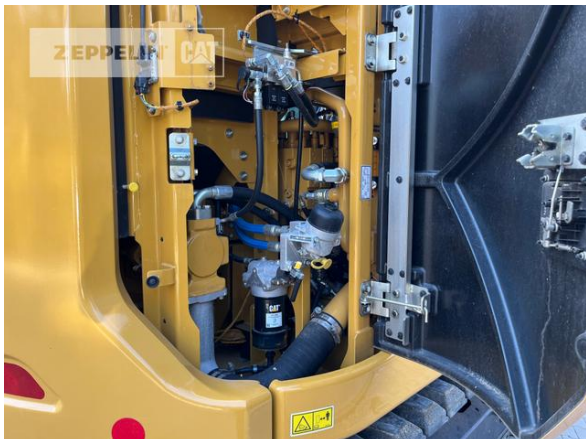
**Cat 315-07B**

Serial No.: WKX20729



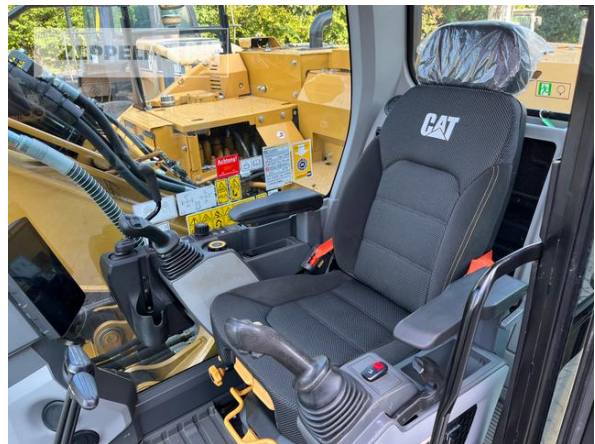
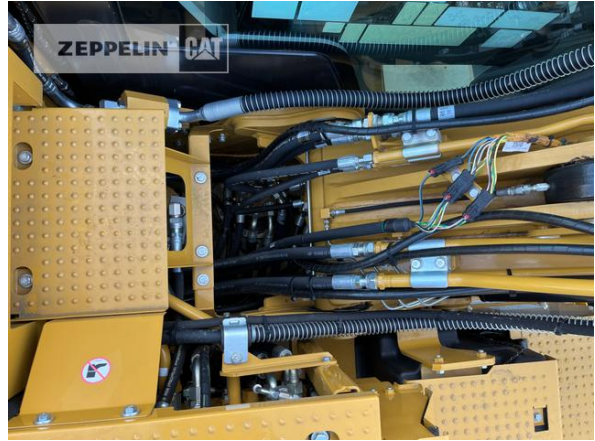


**Cat 315-07B**  
Serial No.: WKX20729





**Cat 315-07B**  
Serial No.: WKX20729





**Cat 315-07B**  
 Serial No.: WKX20729

