

Cat 315-07B
 Serial No.: WKX20546



Zeppelin Baumaschinen
Zeppelin Baumaschinen GmbH Niederlassung
Illingen
 Zeppelinstr. 2
 66557 Illingen
 Germany
<https://www.zeppelin-cat.de/en/>

Andrej Kraus
 Phone: +49 682540513
 Mobile: +49 1718091376
andrej.kraus@zeppelin.com

Manufacturer	Cat
Category	Tracked Excavators
Year	2022
Hours	1.098
kind of cabin	cabin ROPS
boom	mono boom
kind of stick	standard
kind of bucket	gp bucket
cutting width	700 mm
bucket condition	40 %
kind of bucket 2	gp bucket
cutting width	1.200 mm
bucket 2 condition	50 %
hydraulic lines	lines for hammer/shear
track shoes (pads) wide	500 mm
track shoes (pads) condition	60 %
undercarriage sprockets	50 %
undercarriage idlers	50 %
undercarriage track rollers	50 %
undercarriage track links	50 %
undercarriage track bushings	50 %
undercarriage carrier rollers	50 %
quick coupler	quick coupler hydraulic
quick coupler type	CW20H
auto lubrication	yes
stabilizer blade	yes
rear view camera	yes
size class	0,5 cbm
Operating Weight	15,4 t
Engine Power	81 kW (111 HP)

The logo for Zeppelin, featuring the word "ZEPPELIN" in a bold, black, sans-serif font on a yellow rectangular background.

Cat 315-07B

Serial No.: WKX20546

Net price

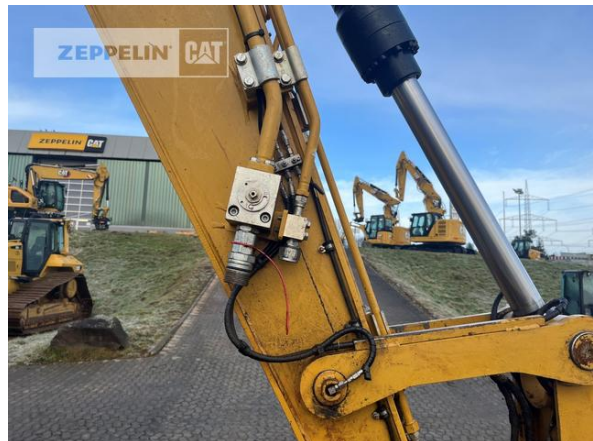
149.000,00 EUR (excl. VAT)

Terms of delivery

FCA Zeppelin branch Illingen

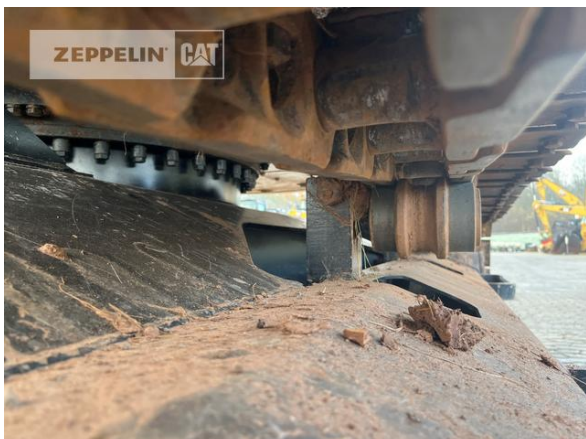
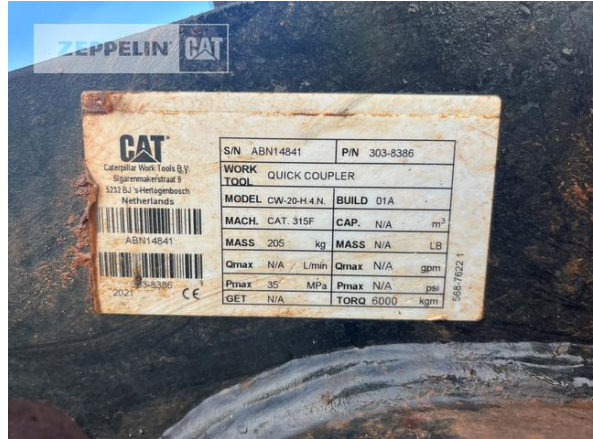
This offer is without obligation. The offer is based on our General Terms and Conditions of Sale and Delivery. Changes to equipment and accessories required for technical reasons may be made at any time. Subject to errors, changes and intermediate sale. Statutory value-added tax shall be added to all price.

Cat 315-07B
Serial No.: WKX20546



Cat 315-07B

Serial No.: WKX20546



Cat 315-07B

Serial No.: WKX20546

