

Cat 303.5CR-07
 Serial No.: CE902142



Zeppelin Baumaschinen
Zeppelin Baumaschinen GmbH Niederlassung
München
 Graf-Zeppelin-Platz 2
 85748 Garching bei München
 Germany
<https://www.zeppelin-cat.de/en/>

Lucian-Sorin Ivan
 Phone: +49 8932197111
 Fax: +49 8932197150
 Mobile: +49 15161051231
ZBM-GM.Muenchen@zeppelin.com

Niclas Karremann
 Phone: +49 8932197110
 Mobile: +49 1715538908
ZBM-GM.Muenchen@zeppelin.com

Manufacturer	Cat
Category	Mini Excavators
Year	2023
Hours	568
offset-boom	yes
stick length	1.560 mm
kind of bucket	gp bucket
cutting width	800 mm
bucket condition	40 %
kind of bucket 2	gp bucket
cutting width	300 mm
bucket 2 condition	70 %
kind of bucket 3	gp bucket
cutting width excavator bucket 3	600 mm
bucket 3 condition	70 %
chain type	rubber track
track shoes (pads) wide	300 mm
track shoes (pads) condition	90 %
undercarriage sprockets	90 %
undercarriage idlers	90 %
undercarriage track rollers	90 %
undercarriage track links	90 %
undercarriage track bushings	90 %
undercarriage carrier rollers	90 %
quick coupler	quick coupler mechanic
quick coupler type	MS03
stabilizer blade	yes
Operating Weight	3,6 t
Engine Power	18 kW (25 HP)
equipment	AUX1 für Hammer und Schwenklöffel und AUX2 für Abbruch Sortiergreifer (Greifer drehen)

 ZEPPELIN

Cat 303.5CR-07

Serial No.: CE902142

Net price

44.900,00 EUR (excl. VAT)

Terms of delivery

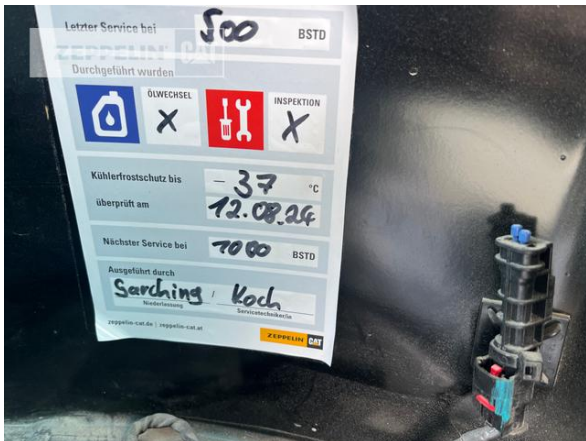
FCA Zeppelin branch München

This offer is without obligation. The offer is based on our General Terms and Conditions of Sale and Delivery. Changes to equipment and accessories required for technical reasons may be made at any time. Subject to errors, changes and intermediate sale. Statutory value-added tax shall be added to all price.

Cat 303.5CR-07
Serial No.: CE902142



Cat 303.5CR-07
Serial No.: CE902142



Cat 303.5CR-07
 Serial No.: CE902142



Cat 303.5CR-07
Serial No.: CE902142

