

Cat 289D
 Serial No.: TAW10182



Zeppelin Baumaschinen
Bereich Konzernkunden
 Graf-Zeppelin-Platz 1
 85748 Garching bei München
 Germany
<https://www.zeppelin-cat.de/en/>

Mathias Stemmer
 Phone: +49 8932197550
 Fax: +49 8932197280
 Mobile: +49 1721334554
mathias.stemmer@zeppelin.com

Manufacturer	Cat
Category	Skid Steer Loaders
Year	2018
Hours	2.815

front door	yes
bucket type	gp-bucket with cutting edge
bucket condition	70 %
3rd hydr. line	yes
rubber chain width	450 mm
rubber chain condition	70 %
undercarriage sprockets	70 %
undercarriage idlers	70 %
undercarriage track rollers	70 %
undercarriage carrier rollers	70 %
quick coupler	quick coupler mechanic
size class	0,5 cbm
Operating Weight	4,8 t
Engine Power	54 kW (74 HP)
air conditioning equipment	yes
	Standort/location: München, letzter Service bei/last service at: 2.200 Stunden/hours, EU Abgasstufe 3B/emissions level EPA Tier4

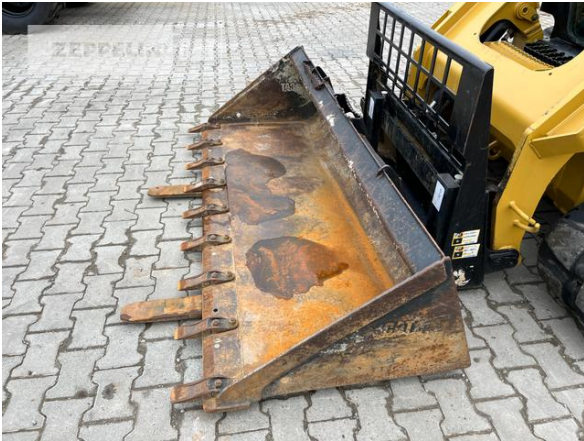
Net price	59.000,00 EUR (excl. VAT)
Terms of delivery	FCA Zeppelin branch Konzernkunden

This offer is without obligation. The offer is based on our General Terms and Conditions of Sale and Delivery. Changes to equipment and accessories required for technical reasons may be made at any time. Subject to errors, changes and intermediate sale. Statutory value-added tax shall be added to all price.

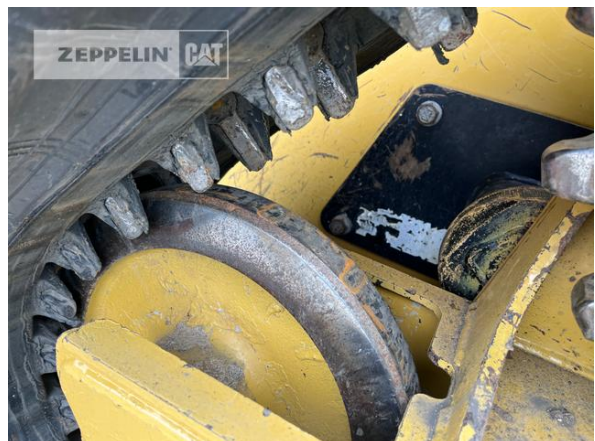
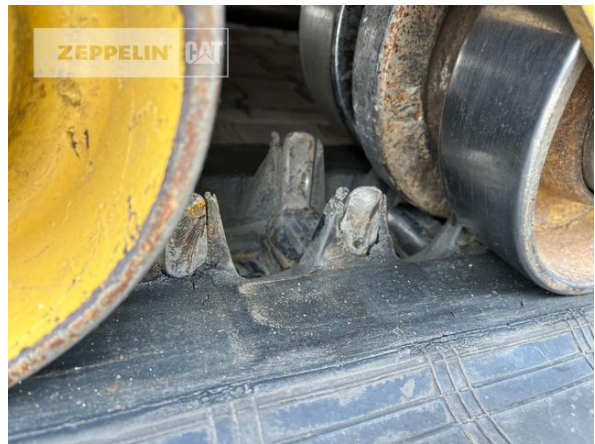
Cat 289D
Serial No.: TAW10182



Cat 289D
Serial No.: TAW10182



Cat 289D
Serial No.: TAW10182



Cat 289D
Serial No.: TAW10182



Cat 289D

Serial No.: TAW10182

