

**Cat 289D**

Serial No.: BT900639



**Zeppelin Baumaschinen**  
**Zeppelin Baumaschinen GmbH Niederlassung**  
**Rendsburg**  
Nikolaus-Otto-Str. 4  
24783 Osterrönfeld  
Germany  
<https://www.zeppelin-cat.de/en/>

Benjamin Kunisch  
Phone: +49 4331847732  
Mobile: +49 15146190739  
[benjamin.kunisch@zeppelin.com](mailto:benjamin.kunisch@zeppelin.com)

Philipp Westhoff  
Mobile: +49 1712342639  
[philipp.westhoff@zeppelin.com](mailto:philipp.westhoff@zeppelin.com)

<b>Manufacturer</b>	<b>Cat</b>
<b>Category</b>	<b>Skid Steer Loaders</b>
<b>Year</b>	<b>2019</b>
<b>Hours</b>	<b>1.505</b>
front door	yes
bucket type	gp-bucket with teeth
actual bucket volume	0,5 cbm
bucket condition	60 %
3rd hydr. line	yes
rubber chain condition	40 %
undercarriage sprockets	60 %
undercarriage idlers	70 %
undercarriage track rollers	70 %
undercarriage carrier rollers	70 %
quick coupler	quick coupler hydraulic
size class	0,5 cbm
Operating Weight	4,8 t
Engine Power	54 kW (74 HP)
air conditioning	yes

**Net price** **63.000,00 EUR (excl. VAT)**  
**Terms of delivery** **FCA Zeppelin branch Rendsburg**

This offer is without obligation. The offer is based on our General Terms and Conditions of Sale and Delivery. Changes to equipment and accessories required for technical reasons may be made at any time. Subject to errors, changes and intermediate sale. Statutory value-added tax shall be added to all price.

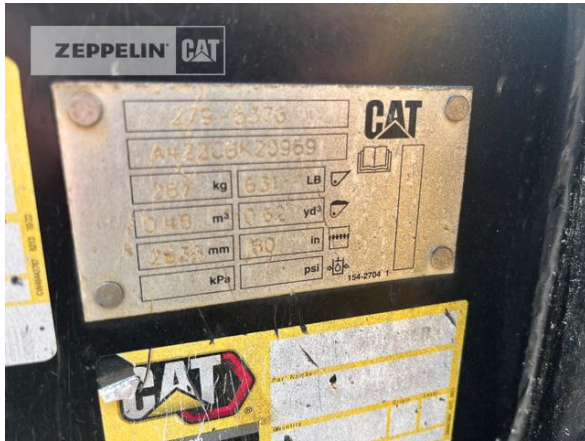
**ZEPPELIN**



**Cat 289D**  
Serial No.: BT900639



**Cat 289D**  
Serial No.: BT900639



**Cat 289D**

Serial No.: BT900639

