

Cat 289D

Serial No.: BT900576



Zeppelin Baumaschinen
Zeppelin Baumaschinen GmbH Niederlassung
Westerstede
Zum Heerenberg 4
26655 Westerstede
Germany
<https://www.zeppelin-cat.de/en/>

Philipp Westhoff
Mobile: +49 1712342639
philipp.westhoff@zeppelin.com

Manufacturer	Cat
Category	Skid Steer Loaders
Year	2019
Hours	1.502

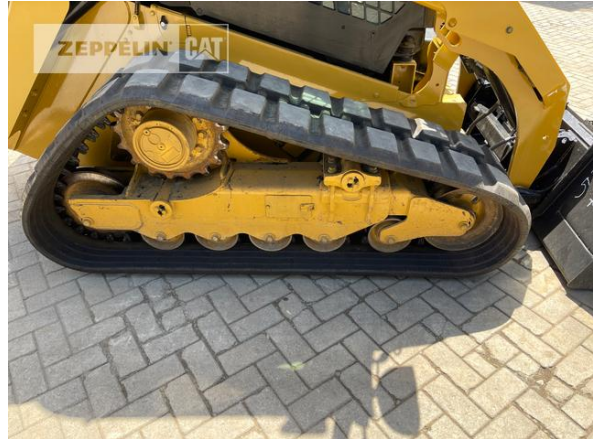
front door	yes
bucket type	gp-bucket with teeth
actual bucket volume	0,5 cbm
bucket condition	60 %
3rd hydr. line	yes
rubber chain condition	99 %
undercarriage sprockets	70 %
undercarriage idlers	70 %
undercarriage track rollers	70 %
undercarriage carrier rollers	70 %
quick coupler	quick coupler mechanic
size class	0,5 cbm
Operating Weight	4,8 t
Engine Power	54 kW (74 HP)
air conditioning equipment	yes Two Speed /// High Flow XPS

Net price **55.500,00 EUR (excl. VAT)**

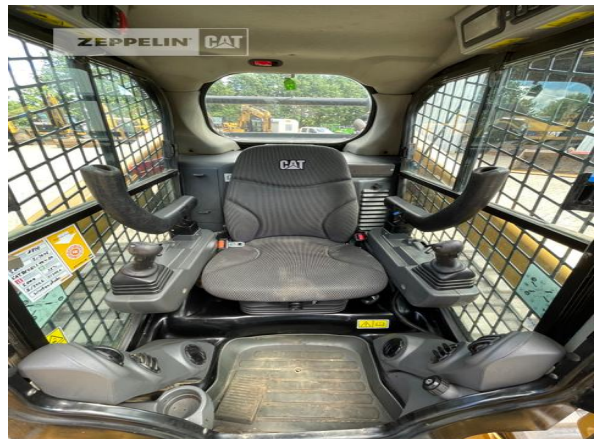
Terms of delivery **FCA Zeppelin branch Westerstede**

This offer is without obligation. The offer is based on our General Terms and Conditions of Sale and Delivery. Changes to equipment and accessories required for technical reasons may be made at any time. Subject to errors, changes and intermediate sale. Statutory value-added tax shall be added to all price.

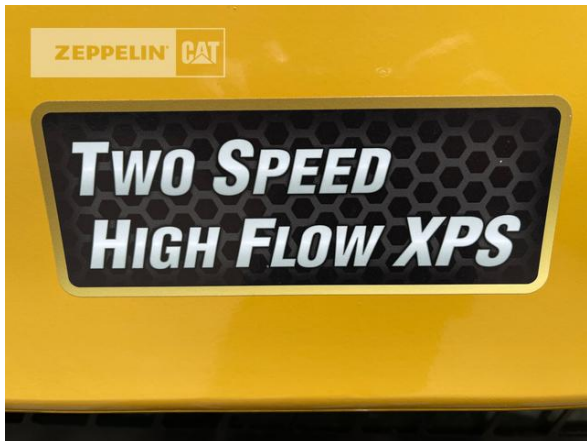
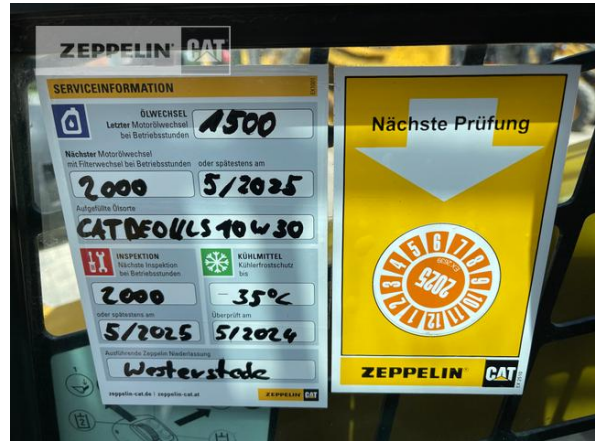
Cat 289D
Serial No.: BT900576



Cat 289D
Serial No.: BT900576

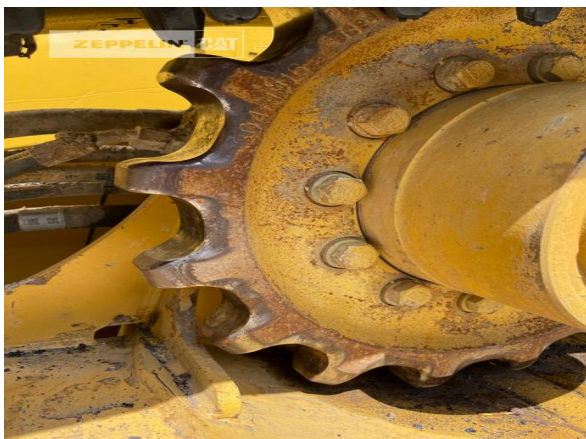
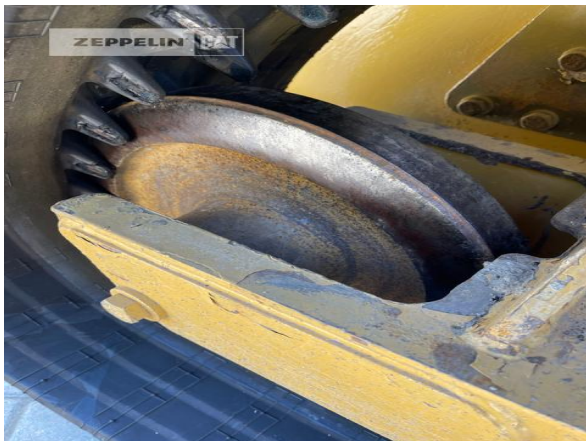


Cat 289D
 Serial No.: BT900576



Cat 289D

Serial No.: BT900576



Cat 289D
Serial No.: BT900576

