

MH3032

WHEEL MATERIAL HANDLER



Engine Model
Operating Weight
Maximum Reach

Cat® C7.1
35 800 kg (78,950 lb)
14 080 mm (46.2 ft)



MH3032

WHEEL MATERIAL HANDLER

The Cat® MH3032 is a versatile, productive solution in the 30 mt (66,139 lb) size class. Drop nose and straight stick options along with an optional generator help expand versatility in scrap, waste, and recycling applications. The MH3032 helps maximize performance with its configuration and technology options for optimum production.



HIGH PERFORMANCE

A long reach offering helps you move more material without repositioning the machine. Large grapple compatibility allows you to move more material at a time.

UNMATCHED VERSATILITY

Drop nose and straight stick options along with an optional 20 kW (26.8 hp) generator for magnet operation help expand the MH3032's versatility.

ERGONOMIC COMFORT

A cushioning hydraulic cab riser helps provide operator comfort and high visibility to the jobsite. Multiple machine access points help improve safety and accessibility.

LATEST FEATURES



Machine Setup Simplification

- At the touch of fingertips and navigating user-friendly icons, the latest operator oriented User Interface (UI) maximizes uptime and gets crews to work without delay. From re-ordering work tool lists to creating new work tool combinations as needed, operators can quickly set up machines and easily access information.
- The interface allows operators to maintain accuracy and makes the most of every second of their shift. Adding the ability to input couplers and attachments into the system makes setting up work tool combinations highly efficient by significantly reducing calibration time. It also eliminates the need to measure up again when changing Cat® work tool attachments and makes it manageable for a single person to check and adjust for bucket wear.

Cat Payload*

- Cat Payload provides operators with on-the-go weighing to help them hit load targets and avoid overloading, underloading, or misloading materials. Combine Payload with VisionLink® Productivity** to analyze jobsites and individual assets for remote management of production targets and key metrics.

Swing Assist

- Swing Assist automatically stops machine swing at operator-defined preset points. Simply swing to the desired stopping point and activate using the machine monitor or a preset joystick button. As you get closer, the machine will automatically decelerate and not allow swing past the set point. Swing Assist helps you hit more repetitive swing targets to help reduce fuel use and improve cycle times.

**Payload technologies are not legal for trade.*

***VisionLink subscription required.*

*Not all features are available in all regions. Please check with your local Cat dealer for specific offering availability in your area.
Build Number: 07E*

HIGH PERFORMANCE

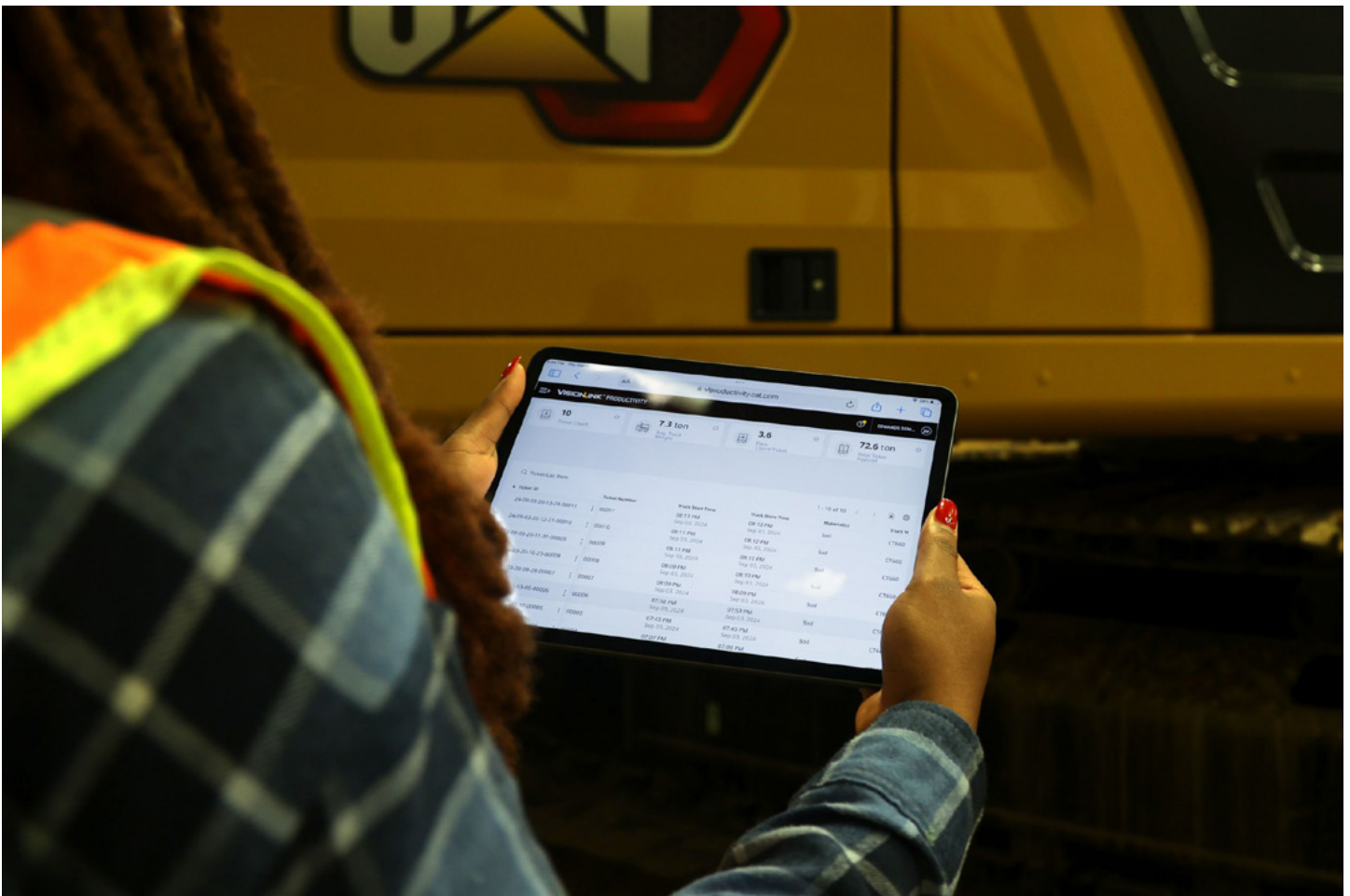


- The C7.1 engine can run on biodiesel up to B20 and meets U.S. EPA Tier 4 Final, EU Stage V, Japan 2014 and Korea Stage V emission standards with an aftertreatment system that requires no maintenance or downtime.
- Match the machine to the job with three power modes – Power, Smart, and Eco. Smart mode automatically matches engine and hydraulic power to working conditions, helping provide maximum power when needed and reducing power when it isn't to save fuel.
- The advanced electro-hydraulic system helps provide the optimum balance of power and efficiency while giving you the control you need.
- Available SmartBoom™ lets the boom freely travel up and down without using any pump flow so operators can focus on stick and bucket work.
- Valve priority helps put hydraulic pressure and flow where you need it.
- Program and store your preferred power mode and joystick settings using your Operator ID. The machine will automatically remember your selections.

TAKE THE GUESSWORK OUT OF MANAGING YOUR EQUIPMENT

- Cat Payload helps you achieve precise load targets to improve your operating efficiency. Pick up a load of material – with a bucket and thumb combination or grapple and clamshell attachments – and get a real-time weight estimate without swinging.
- Combine Cat Payload with VisionLink and remotely manage your production targets.
- VisionLink provides actionable data insights for all assets – regardless of fleet size or equipment manufacturer.* Review equipment data from your desktop or mobile device to maximize uptime and optimize assets. Dashboards provide information such as hours, miles, location, idle time, and fuel utilization. Make informed decisions that lower costs, simplify maintenance, and improve safety and security on your jobsite.
- Swing Assist automatically stops machine swing at operator defined preset points. Simply swing to the desired stopping point and activate using the machine monitor or a preset joystick button. As you get closer, the machine will automatically decelerate and not allow swing past the set point. Swing Assist helps you hit more repetitive swing targets to help reduce fuel use and improve cycle times.
- Remote Troubleshoot is a mobile application that allows your Cat dealer to perform diagnostic testing on your connected machine remotely to help ensure that issues are resolved quickly and with less downtime.
- Remote Flash is a mobile application that allows you to update onboard software without a technician being present, allowing you to initiate software updates when convenient, increasing your overall operating efficiency.

**Data field availability can vary by equipment manufacturer.*



WORK IN COMFORT

- Choose between a deluxe and premium cab. Both provide a comfortable, ergonomic work environment.
- The cab has a wide seat that adjusts for operators of all sizes.
- Get in and out of the cab easier using the tilt-up left console.
- Control the machine comfortably with easy-to-reach controls all located in front of you.
- Standard automatic climate control keeps you at the right temperature all shift long.
- Stow your gear with plenty of in-cab storage beneath and behind the seat, overhead, and in the consoles. A cup holder, document holder, bottle holder, and coat hook are also provided.
- Connect to personal devices via the standard radio's USB ports and Bluetooth® technology.
- Optional auxiliary relay powers on and turns off CB radios, beacon lights, and other attachments without you taking your hands off the joysticks.
- Cat continues to improve user interface functionality for operators of all skill levels. The touchscreen monitor is an easy-to-use operating tool that presents the jobsite dashboard with an intuitive format.
- Productivity applications are displayed in grid view to read on the go, and touchscreen navigation is programmed to ensure job performance continues without any hold-ups.



RELIABLE, DURABLE, AND VERSATILE

- Count on your machine to withstand wear throughout the years. Boom, sticks, and other high-stress areas are reinforced with thick multi-plate fabrications, castings, and forgings to help ensure quality and reliability.
- The upper frame uses specially designed mountings to support the heavy-duty cab and the lower frame is reinforced to help enhance component durability.
- Work up to 3000 m (9,840 ft) above sea level without de-rating.
- Don't let the temperature stop you from working. The machine has a standard cold start capability of -18°C (0°F).
- Auto warm up speeds up hydraulic oil warming in cold temperatures and helps prolong the life of components.
- Standard autolube simplifies maintenance by automatically keeping the machine greased from the swing bearing and cab riser to the stick end.
- An optional 20 kW (26.8 hp) generator allows for magnet operation. Generator controls are fully integrated into the cab monitor.
- Expand your work capabilities with attachments for a variety of applications.



MAINTENANCE



- Track your machine's filter life and maintenance intervals via the in-cab monitor.
- Scheduled Oil Sampling (S-O-SSM) ports are located at ground level, helping simplify maintenance and allowing for quick, easy extraction of fluid samples for analysis.
- The long life of the air intake filter with pre-cleaner helps save on maintenance costs.
- The hydraulic oil filter helps provide high filtration performance, anti-drain valves to help keep oil clean when the filter is replaced, and long life with a 3,000-hour replacement interval.
- High-efficiency cooling fans run only when needed; you can program intervals so they automatically reverse to help keep cores clean without interrupting your work.
- Boost productivity with proactive service reminders. The integrated vehicle health management system alerts the operator with step-by-step service guidance and the parts needed to help reduce unnecessary downtime.

SAFETY FEATURES



- Cab Avoidance helps you avoid contact between your worktool attachment and the cab.
- Standard 2D E-fence prevents your machine from moving outside operator-defined parameters.
- Ground-level shutoff switch stops all fuel to the engine when activated and shuts down the machine.
- Keep your machine secure with Operator ID. Use your PIN code on the monitor to enable the push-button starting feature.
- Enjoy great all-around visibility with the help of small cab pillars, large windows, and a flat engine hood design. Rearview and side-view cameras are standard.
- Standard 1,800-lumen LED exterior lights illuminate your surroundings for a safer work environment.
- Thick impact-resistant windshields fulfill P5A standards.
- Service platform design provides easy, safe, and quick access to the upper service platform. The service platform steps use an anti-skid punch plate to help prevent slipping.
- The standard hydraulic lockout lever isolates all hydraulic and travel functions in the lowered position.
- Optional Operator Protective Guards (OPG) protect from falling and flying debris.
- In an emergency, lower the cab safely with the emergency cab lowering valve behind the cab riser or to the right of the seat. The valve located behind the cab riser is easily accessible.
- Boom and stick lowering check valves prevent reverse flow, keeping your front linkage securely in place should the hydraulic system unexpectedly lose pressure.
- Make service work more accessible and safer with optional inspection lighting. With the flip of a switch, lights will illuminate the engine pump, battery, and radiator compartments to enhance visibility.

SUSTAINABILITY

- The Cat® C7.1 diesel engine meets U.S. EPA Tier 4 Final, EU Stage V, Japan 2014 and Korea Stage V.
- Cat diesel engines are required to use ULSD (ultra-low sulfur diesel fuel with 15 ppm of sulfur or less) or ULSD blended with the following lower-carbon intensity fuels** up to: 20% biodiesel FAME (fatty acid methyl ester)* or 100% renewable diesel, HVO (hydrogenated vegetable oil) and GTL (gas-to-liquid) fuels. Refer to guidelines for successful application. Please consult your Cat dealer or “Caterpillar Machine Fluids Recommendations” (SEBU6250) for details.
- Auto Engine Speed Control helps reduce unnecessary fuel burn and greenhouse gas emissions by allowing the engine to automatically go into idle mode when the machine is not working.
- Cat® 2D E-fence keeps the front linkage within a pre-defined work area to avoid hazards such as traffic – not only helping keep personnel safe and helps avoid repairs, downtime, and costly job site fines.
- Extended maintenance intervals help reduce downtime and decrease the amount of fluid and filters that are replaced over the machine's life.
- VisionLink® displays the CO₂ emissions for monitored assets, calculated by fuel type for the Runtime Fuel Burned each day in a selected date range.
- Remote Flash helps minimize downtime and maintenance time while keeping your asset running with maximum efficiency. Alerts for machine updates are sent virtually from your Cat dealer and updates can be deployed without a dealer technician needing to be onsite.
- Remote Troubleshoot helps decrease maintenance time and keeps your machine running with maximum efficiency by allowing your Cat dealer to virtually test the machine while working. Once a problem is identified, a technician can fix it the first time, saving time and money.

**Engines with no aftertreatment devices can use higher blends, up to 100% biodiesel (for use of blends higher than 20% biodiesel, consult your Cat dealer).*

***Tailpipe greenhouse gas emissions from lower-carbon intensity fuels are essentially the same as traditional fuels.*



MORE THAN MACHINES

BUILT AROUND YOUR SUCCESS

When you buy Cat equipment, you get so much more than the machine. You also get the support of a world-class dealer network, backed by a range of flexible solutions, technology, tools, and more.



CUSTOMER VALUE AGREEMENTS

A Customer Value Agreement (CVA) from your Cat dealer helps you do more and worry less. A CVA simplifies machine ownership and maintenance, adds the security of expert dealer support, and gives you the peace of mind from effective equipment health management.

GENUINE CAT PARTS

Genuine Cat parts deliver the highest level of reliability and productivity. Order direct from your Cat dealer or shop online at parts.cat.com.

REPAIR OPTIONS

A broad range of repair options gives you choices that work with your needs, budget, and timeline. Every repair is performed by expert Cat technicians. You'll receive smart repair advice, a timely, accurate quote, and service that gets your machine back into action quickly.

FINANCIAL SERVICES

Count on Cat Financial to provide the best finance and extended protection solutions for your business. For more than 30 years, we have helped our customers succeed through financial service excellence.



DOZERS



SKID STEERS



MATERIAL HANDLERS



EXCAVATORS



WHEEL LOADERS



TRACK LOADERS

INCREASE YOUR PRODUCTIVITY AND PROFIT WITH CAT ATTACHMENTS

You can easily expand the performance of your machine by utilizing any of the variety of Cat attachments. Each Cat attachment is designed to fit the weight and horsepower of Cat material handlers for improved performance, safety, and stability.

GSH – ORANGE PEEL GRAPPLES



GSV – ORANGE PEEL GRAPPLES



CLAMSHELL GRAPPLES



DEMO AND SORTING GRAPPLES



MULTI-PROCESSORS



SHEARS



TECHNICAL SPECIFICATIONS

Engine

Engine Model	Cat C7.1	
Net Power – ISO 9249	150 kW	201 hp
Net Power – ISO 9249 (DIN)	204 hp (metric)	
Engine Power – ISO 14396	151 kW	202 hp
Engine Power – ISO 14396 (DIN)	205 hp (metric)	
Bore	105 mm	4.1 in
Stroke	135 mm	5.3 in
Displacement	7 L	428 in ³

Advertised power is tested per the specified standard in effect at the time of manufacture.

Net power advertised is the power available at the flywheel when engine is equipped with fan, air cleaner, Clean Emission Module (CEM) exhaust gas aftertreatment, alternator, and cooling fan running at intermediate speed.

Transmission

Maximum Travel Speed	18 km/h	11.2 mile/h
Drawbar Pull	145 kN	32,597 ft-lbf
Maximum Gradeability	45%	

Hydraulic System

Maximum Pressure – Implements	35 000 kPa	5,076 psi
Maximum Pressure – Swing	28 400 kPa	4,119 psi
Maximum Pressure – Travel	35 000 kPa	5,076 psi

Swing Mechanism

Swing Speed	7 r/min	
Maximum Swing Torque	82 kN·m	60,680 lbf-ft

Weights

Operating Weight	35 800 kg	78,950 lb
------------------	-----------	-----------

Operating weight includes full fuel tank, 75 kg (165 lb) operator and a 2000 kg (4,410 lb) grapple. Weight varies depending on configuration.

Service Refill Capacities

Fuel Tank Capacity	474 L	125.2 gal
Cooling System	25 L	6.6 gal
Engine Oil	25 L	6.6 gal
Rear Axle – Housing (Differential)	19.5 L	5.2 gal
Final Drive	2.2 L	0.6 gal
Powershift Transmission	3 L	0.8 gal
Hydraulic System – Including Tank	301 L	79.5 gal
Hydraulic Tank	147 L	38.8 gal
Diesel Exhaust Fluid (DEF) Tank	41 L	10.8 gal

Dimensions

Boom	MH 8.5 m (27'11")	
Stick	6.4 m (21'0") Drop Nose	
Shipping Length	11 860 mm	38.9 ft
Machine Length	5785 mm	19 ft
Tail Swing Radius	3000 mm	9.8 ft
Counterweight Clearance	1465 mm	4.8 ft
Cab Height – Lowered	3500 mm	11.5 ft
Cab Height – Lowered with OPG	3550 mm	11.6 ft
Cab Height – Raised	6095 mm	20 ft
Cab Height – Raised with OPG	6145 mm	20.2 ft
Wheel Base	3200 mm	10.5 ft
Shipping Width	3000 mm	9.8 ft
Ground Clearance	249 mm	0.8 ft
Undercarriage Length	5781 mm	19 ft

Working Ranges

Boom	MH 8.5 m (27'11")	
Stick	6.4 m (21'0") Drop Nose	
Maximum Reach	14 080 mm	46.2 ft
Maximum Height	15 470 mm	50.8 ft
Maximum Dump Height	4670 mm	15.3 ft
Maximum Depth	4990 mm	16.4 ft
Boom Pin Height	10 750 mm	35.3 ft

STANDARD & OPTIONAL EQUIPMENT

NOTE: Standard and optional equipment may vary. Consult your Cat dealer for details.

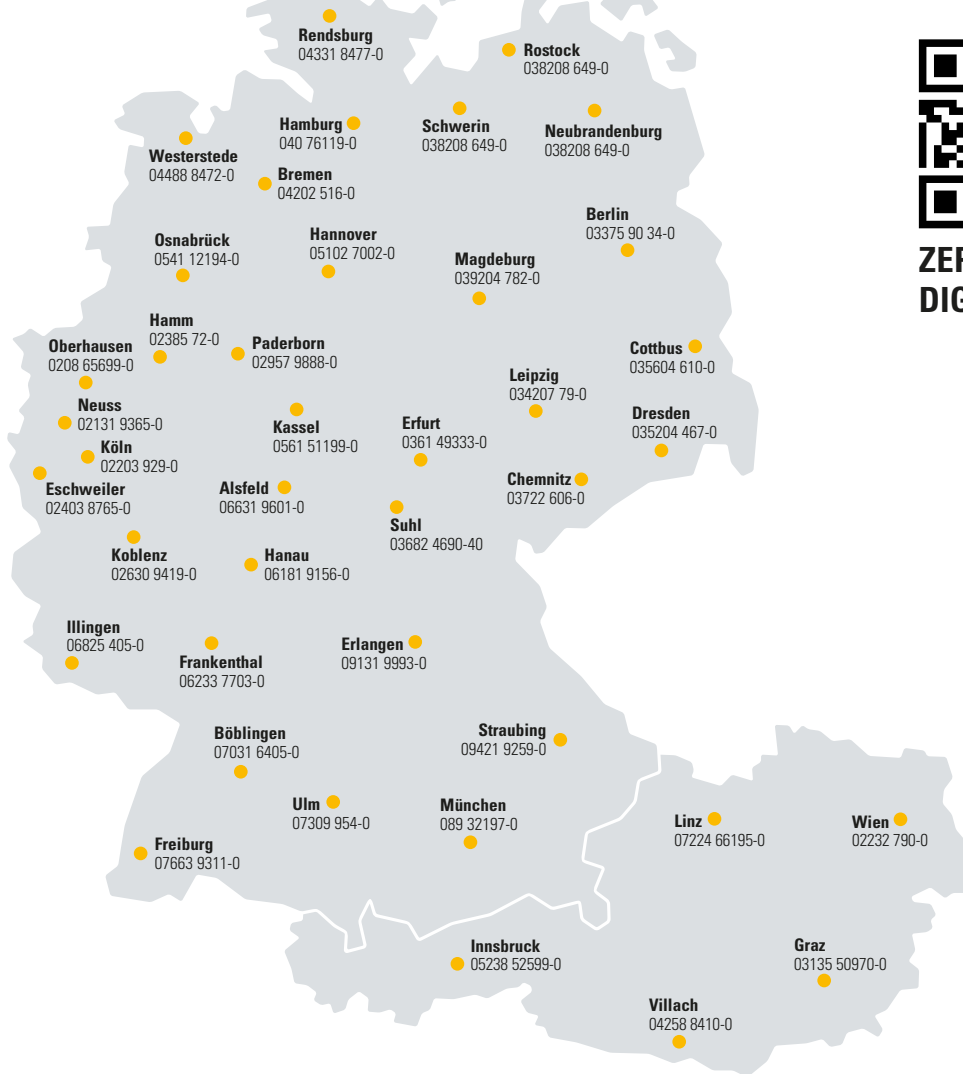
	Standard	Optional
UNDERCARRIAGE AND STRUCTURES		
All wheel drive	✓	
Automatic brake/axle lock	✓	
Creeper speed	✓	
Electronic swing and travel lock	✓	
Heavy-duty axles, advanced disc brake system, and travel motor with adjustable braking force	✓	
Lockable, oscillating front axle with remote greasing point	✓	
Dual Solid Tires (12.00-20)	✓	
Front, right hand side (RHS), and left hand side (LHS) cab access	✓	
Two speed hydrostatic transmission	✓	
Counterweight 6000 kg (13,250 lb)	✓	
BOOM AND STICKS		
6.4 m (21' 0") drop nose stick		✓
Stickless machine configuration		✓
CAT TECHNOLOGY		
VisionLink	✓	
Remote Flash and Remote Troubleshoot	✓	
Cat Payload	✓	
CAB		
Advanced sound suppressed Tip Over Protective Structure (TOPS) certified cab	✓	
High-resolution 254 mm (10") LCD touchscreen monitor	✓	
Automatic bi-level air conditioner	✓	
Jog dial and shortcut keys for monitor control	✓	
Keyless push-to-start engine control	✓	
Tilt-up left-side console	✓	
Heated and ventilated premium seat with automatic adjustable air suspension	✓	
LED dome light	✓	
Fixed one-piece front window and skylight (P5A classified)		✓
Fixed two-piece front window and skylight (P8B classified)		✓
Operator Protective Guards (OPG)		✓

	Standard	Optional
ENGINE		
Cat C7.1 diesel engine	✓	
Three selectable modes: Power, Smart, Eco	✓	
Up to 3000 m (9,840 ft) altitude capability without engine power de-rate	✓	
Cold starting capability for -18°C (0°F)	✓	
On-demand hydraulic cooling fan with auto-reverse function	✓	
Cold start, block heater		✓
ELECTRICAL SYSTEM		
Maintenance-free battery	✓	
LED lights on chassis (Left Hand [LH], Right Hand [RH]) and counterweight	✓	
Centralized electrical disconnect switch	✓	
Programmable time-delay LED working lights after engine shutdown	✓	
Generator, 20 kW (26.8 hp) with wiring to stick nose		✓
HYDRAULIC SYSTEM		
Boom and stick lowering control check valves	✓	
Boom and stick regeneration circuits	✓	
Electronic main control valve	✓	
Automatic hydraulic oil warm up	✓	
High performance hydraulic return filter	✓	
Fine swing capability (N Am only)		✓
SAFETY AND SECURITY		
Rear and right-side-view cameras	✓	
Caterpillar One Key Security System	✓	
Travel alarm	✓	
Lockable external tool/storage box	✓	
Ground-level accessible secondary engine shutoff switch	✓	
2D E-fence	✓	
Cab Avoidance	✓	
Swing Assist	✓	
Rear window emergency exit	✓	
Rotating beacon on cab		✓
Signal/warning horn		✓

ZEPPELIN

ZEPPELIN – GANZ IN IHRER NÄHE

Mit unseren rund 40 Niederlassungen in Deutschland und Österreich sind wir immer in der Nähe Ihres Standortes oder Ihrer Baustelle. Der Zeppelin Service steht Ihnen rund um die Uhr zur Verfügung. Wir liefern 98 % aller Ersatzteile innerhalb von 24 Stunden.

**ZEPPELIN
DIGITAL**

Günstige Finanzierungen
für alle unsere Maschinen
über unseren

Partner Cat Financial.

**Schnell. Einfach. Flexibel.
Individuell.**

Zeppelin Baumaschinen GmbH
Graf-Zeppelin-Platz 1 · 85748 Garching bei München
Tel. 089 32000-0 · zeppelin-cat@zeppelin.com
zeppelin-cat.de

Zeppelin Österreich GmbH
Zeppelinstraße 2 · 2401 Fischamend bei Wien
Tel. 02232 790-0 · info.at@zeppelin.com
zeppelin-cat.at

For more complete information on Cat products, dealer services and industry solutions, visit us on the web at www.cat.com.

© 2025 Caterpillar. All Rights Reserved.

Materials and specifications are subject to change without notice. Featured machines in photos may include additional equipment. See your Cat dealer for available options.

CAT, CATERPILLAR, LET'S DO THE WORK, their respective logos, SmartBoom, S-O-S, Product Link, "Caterpillar Corporate Yellow," the "Power Edge" and Cat "Modern Hex" trade dress as well as corporate and product identity used herein, are trademarks of Caterpillar and may not be used without permission. VisionLink is a trademark of Caterpillar Inc., registered in the United States and in other countries. www.cat.com www.caterpillar.com

AEXQ4183-01
Replaces AEXQ4183-00
Build Number: 07E
(Aus-NZ, Europe,
Japan, N Am, S Am)

